

APP CRS	Rwy Idg	3800
304°	TDZE	1948
	Apt Elev	1950

RNAV (GPS) RWY 30

CROSBY MUNI (D50)

RNP APCH

▼

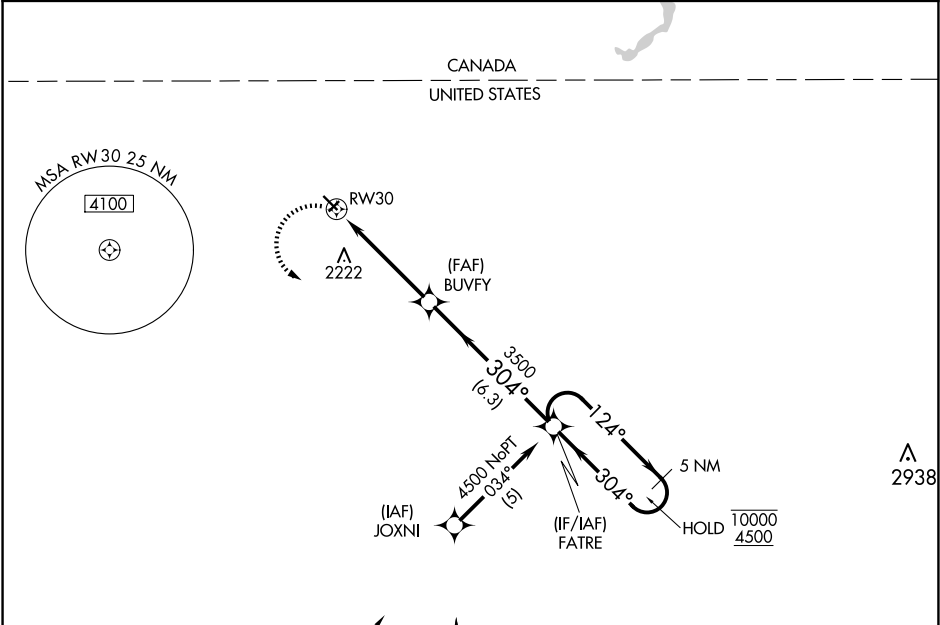
▲

Circling NA to Rwys 3 and 21. Circling Rwy 12 NA at night.

Rwy 30 helicopter visibility reduction below 1 SM NA.

MISSED APPROACH: Climbing left turn to 4500 direct FATRE and hold.

AWOS-3	SALT LAKE CITY CENTER	CTAF
118.025	126.85 305.2	122.9 0



Procedure NA for arrivals at ISN
VOR/DME on V71 northwest bound.

4500
027° (36.7)

WILLISTON
ISN

4500
348° (28.7)

FONIA

4500

FATRE

VGSI and descent angles not coincident
(VGSI Angle 3.00/TCH 33).

5 NM Holding Pattern

3.04°

TCH 45

304°

124°

10000

4500

3500

4.7 NM

6.3 NM

CATEGORY	A	B	C	D
LNAV MDA	2560-1	612 (700-1)	2560-1¾ 612 (700-1¾)	2560-2 612 (700-2)
CIRCLING	2560-1	610 (700-1)	2560-1¾ 610 (700-1¾)	2640-2¼ 690 (700-2¼)

