

APP CRS
292°

Rwy Idg
TDZE
Apt Elev

3600
1607
1607

RNAV (GPS) RWY 29

HARVEY MUNI (5H4)

RNP APCH.

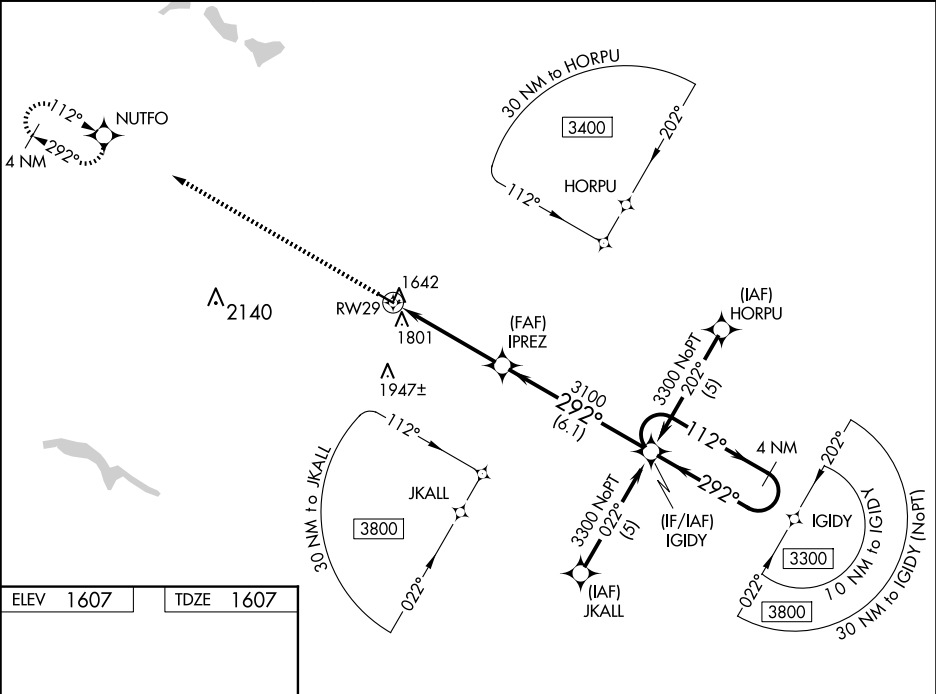
▼

▲ NA

Circling Rwy 11 NA at night. For uncompensated Baro-VNAV systems, LNAV/VNAV NA below -18°C (0°F) or above 54°C (130°F). Baro-VNAV NA when using Devil's Lake altimeter setting. When local altimeter setting not received, use Devil's Lake altimeter setting: increase LNAV/VNAV DA to 2246 feet and visibility LNAV/VNAV all Cats ½ SM; increase all MDA 140 feet and visibility LNAV and Circling Cat C ½ SM.

MISSED APPROACH:
Climb to 3400 direct
NUTFO and hold.

AWOS-3 118.825	MINNEAPOLIS CENTER 135.25 256.7	UNICOM 122.8 (CTAF) 0
-------------------	------------------------------------	--------------------------



ELEV 1607 TDZE 1607

3400

NUTFO

VGSI and RNAV glidepath not coincident
(VGSI Angle 3.00/TCH 27).

IPREZ

IGIDY

4 NM Holding Pattern

112°

292°

3300

GP 3.00°

TCH 40

CATEGORY	A	B	C	D
LNAV/VNAV DA	2119-1¾	512 (600-1¾)		NA
LNAV MDA	2100-1	493 (500-1)	2100-1¼ 493 (500-1¼)	NA
CIRCLING	2120-1	513 (600-1)	2300-2 693 (700-2)	NA