

WAAS CH 82518 W35A	APP CRS 354°	Rwy Idg TDZE Apt Elev	3898 822 825
--	------------------------	-----------------------------	---

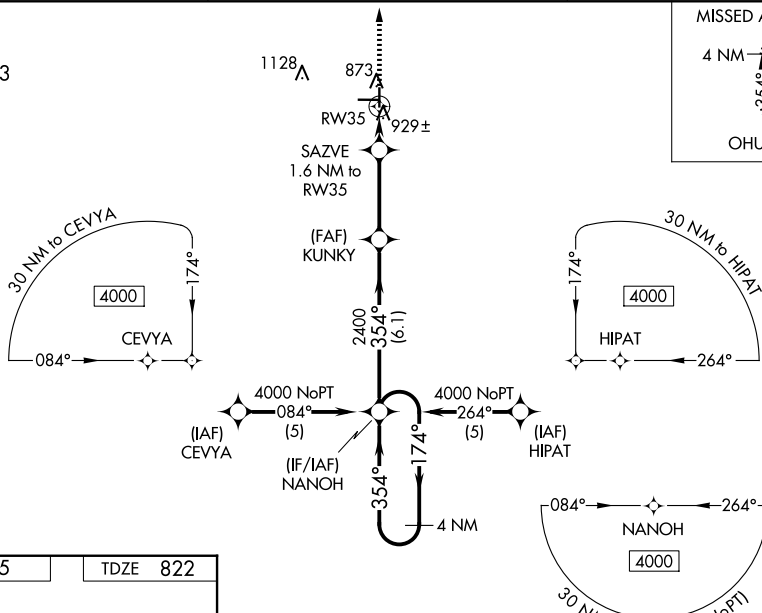
RNAV (GPS) RWY 35
HUTSON FLD (GAF)

RNP APCH - GPS.

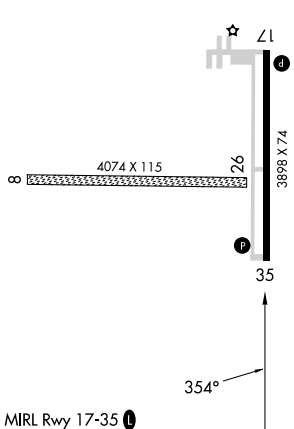
▼ For uncompensated Baro-VNAV systems, LNAV/VNAV NA below -16°C or above 54°C. .
▲ NA When local altimeter setting not received, use Grand Forks Intl altimeter setting: increase LPV DA to 1141 feet and all visibilities ¼ SM; increase LNAV/VNAV DA to 1268 feet and all visibilities ¼ SM; increase all MDA's 80 feet and visibility circling Cat C ¼ SM. Baro-VNAV NA when using Grand Forks Intl altimeter setting.
 Circling NA to Rwy's 8 and 26.

MISSED APPROACH: Climb to 4000 direct OHUTO and hold, continue climb-in-hold to 4000.

AWOS-3 118.625	GRAND FORKS APP CON ★ 118.1 318.1	UNICOM 122.8 (CTAF) 0
--------------------------	---	---------------------------------



ELEV 825		TDZE 822
----------	--	----------



4000 ↑ OHOTO

VGS and RNAV glidepath not coincident (VGS Angle 3.00/TCH 26).

4 NM Holding Pattern

*RNAV only.

SAZVE 1.6 NM to RW35

RW35

KUNKY 2400

NANOH

174° → 4000

← 354°

354°

*1360

2400

GP 3.00° TCH 40

1.6 NM 3.2 NM 6.1 NM

CATEGORY	A	B	C	D
LPV DA	1072-1	250 (300-1)		NA
LNAV/ VNAV DA	1199-1¼	377 (400-1¼)		NA
LNAV MDA	1180-1	358 (400-1)		NA
CIRCLING	1340-1	515 (600-1)	1440-1¾ 615 (700-1¾)	NA