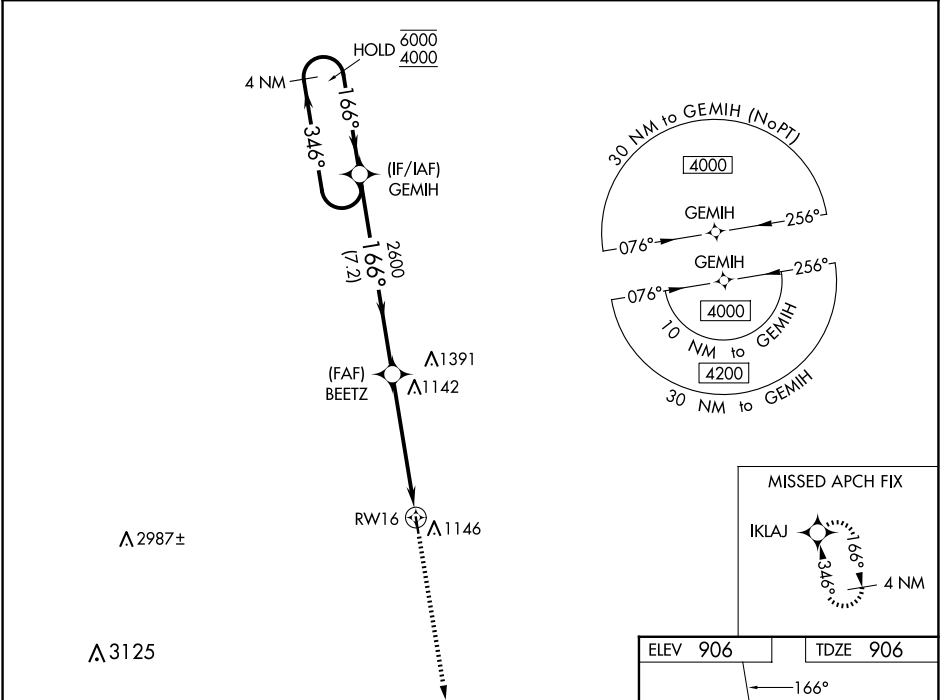


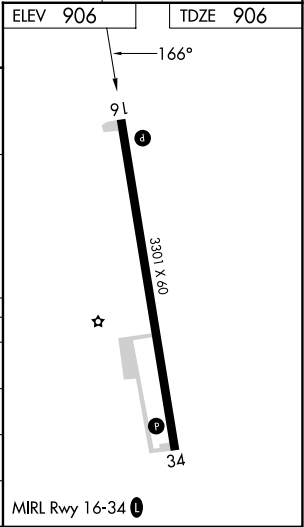
WAAS CH 86837 W16A	APP CRS 166°	Rwy Idg TDZE Apt Elev	3301 906 906
--	------------------------	-----------------------------	---

RNAV (GPS) RWY 16
HILLSBORO MUNI (3H4)

RNP APCH. Baro-VNAV NA. Use Fargo altimeter setting.		MISSED APPROACH: Climb to 4000 direct IKLAJ and hold, continue climb-in-hold to 4000.
FAR ASOS 124.5 379.2	FARGO APP CON 120.4 377.15	CTAF 122.9 0



VGSI and RNAV glidepath not coincident (VGSI Angle 3.00/TCH 28).				
4000 IKLAJ				
4 NM Holding Pattern				
6000 ← 346°				
4000 → 166°				
GP 3.00°				
TCH 45				
7.2 NM 5.2 NM				
CATEGORY	A	B	C	D
LPV DA	1222-1	316 (400-1)		NA
LNAV/VNAV DA	1255-1	349 (400-1)		NA
LNAV MDA	1520-1	614 (700-1)	1520-1¼ 614 (700-1¼)	NA
CIRCLING	1520-1	614 (700-1)	1520-1¼ 614 (700-1¼)	NA



NC-1, 10 JUL 2025 to 07 AUG 2025

NC-1, 10 JUL 2025 to 07 AUG 2025