

WAAS CH <b>72722</b> <b>W17A</b>	APP CRS <b>167°</b>	Rwy Idg <b>3799</b> TDZE <b>225</b> Apt Elev <b>225</b>
--	------------------------	---

RNAV (GPS) RWY 17

GENERAL DEWITT SPAIN (M01)

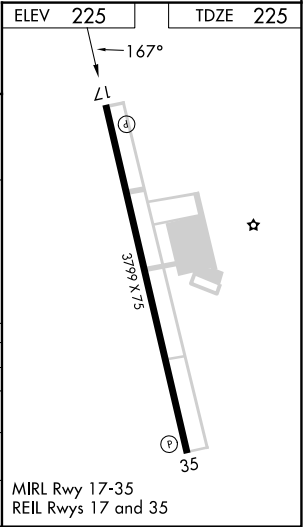
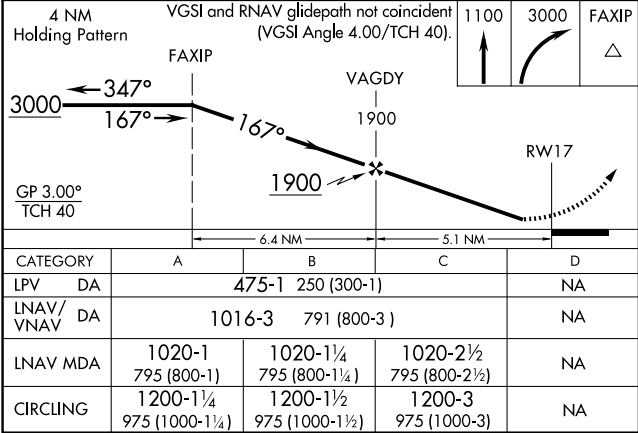
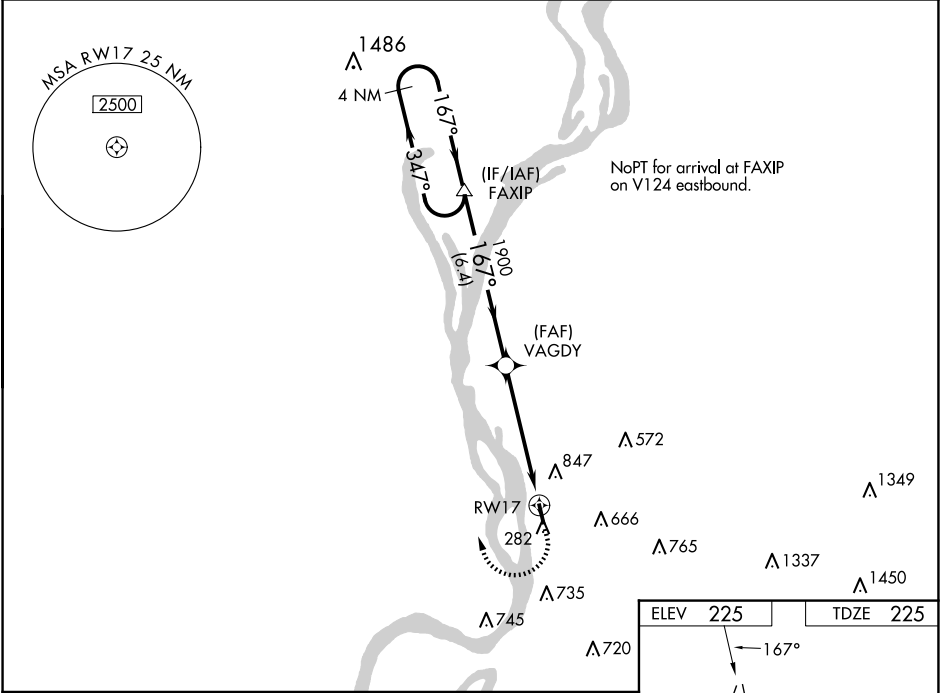
▼

▲ NA

Baro-VNAV NA when using Memphis Intl altimeter setting. For uncompensated Baro-VNAV systems, LNAV/VNAV NA below -15°C (5°F) or above 54°C (130°F). DME/DME RNP-0.3 NA. When local altimeter setting not received, use Memphis Intl altimeter setting and increase all DA and MDA 40 feet and increase LNAV/VNAV visibility all Cats ¼ mile. Circling Rwy 35 NA at night. Rwy 17, helicopter visibility reduction below ¾ SM NA. Rwy 35, helicopter visibility reduction below 1 SM NA.

MISSED APPROACH:  
Climb to 1100 then  
climbing right turn  
to 3000 direct  
FAXIP and hold.

AWOS-3PT <b>118.35</b>	MEMPHIS APP CON <b>119.1 291.6</b>	UNICOM <b>122.7 (CTAF)</b>
---------------------------	---------------------------------------	-------------------------------



SE-1, 10 JUL 2025 to 07 AUG 2025

SE-1, 10 JUL 2025 to 07 AUG 2025