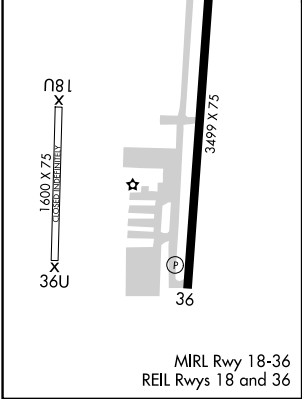
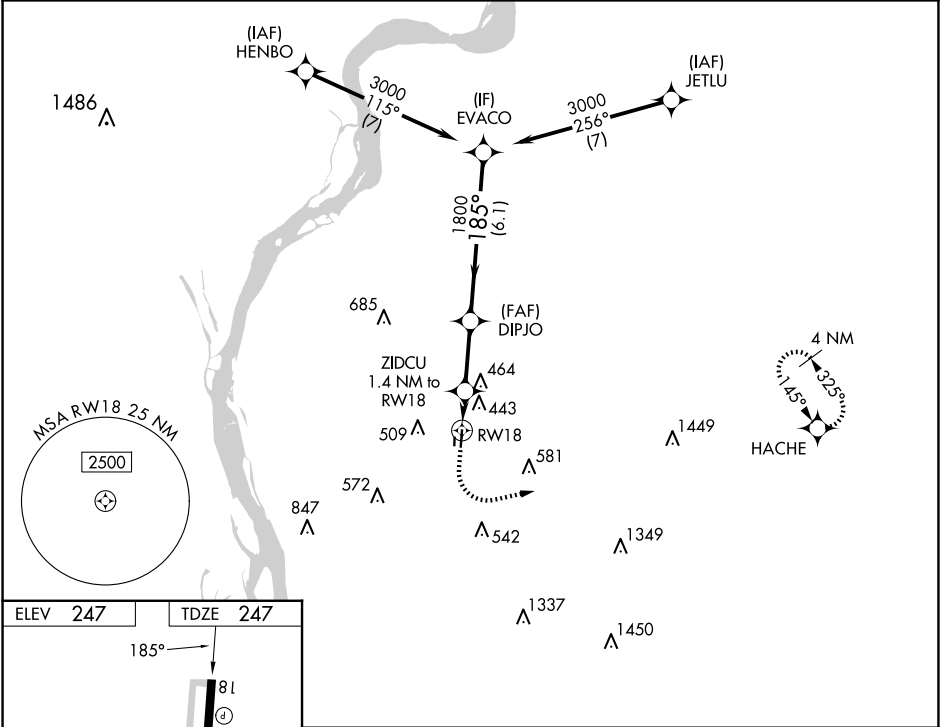


APP CRS	Rwy Idg	3499
185°	TDZE	247
	Apt Elev	247

RNAV (GPS) RWY 18  
CHARLES W BAKER (2M8)

RNP APCH - GPS.	MISSED APPROACH: Climb to 1200 then climbing left turn to 3000 direct HACHE and hold.
<div><div>▼</div><div>NA</div></div> <div>Rwy 18 helicopter visibility reduction below 1 SM NA. When local altimeter setting not received, use Millington/Memphis altimeter setting and increase all MDA 40 feet; and LNAV Cat C visibility ½ SM and Circling Cat C visibility ¼ SM. Straight-in Rwy 18 NA at night, Circling Rwy 18 NA at night.</div>	

AWOS-3PT 119.575	MEMPHIS APP CON 125.8 338.3	UNICOM 122.8 (CTAF)
---------------------	--------------------------------	------------------------



1200	3000	HACHE	VGSI and RNAV glidepath not coincident (VGSI Angle 4.00/TCH 40).
RW18	ZIDCU 1.4 NM to RW18	DIPJO	EVACO
820	1800	3000	
1.4 NM	2.5 NM	6.1 NM	
CATEGORY	A	B	C
LNAV MDA	780-1	533 (600-1)	780-1½
			533 (600-1½)
CIRCLING	780-1	860-1	900-1¾
	533 (600-1)	613 (700-1)	653 (700-1¾)