

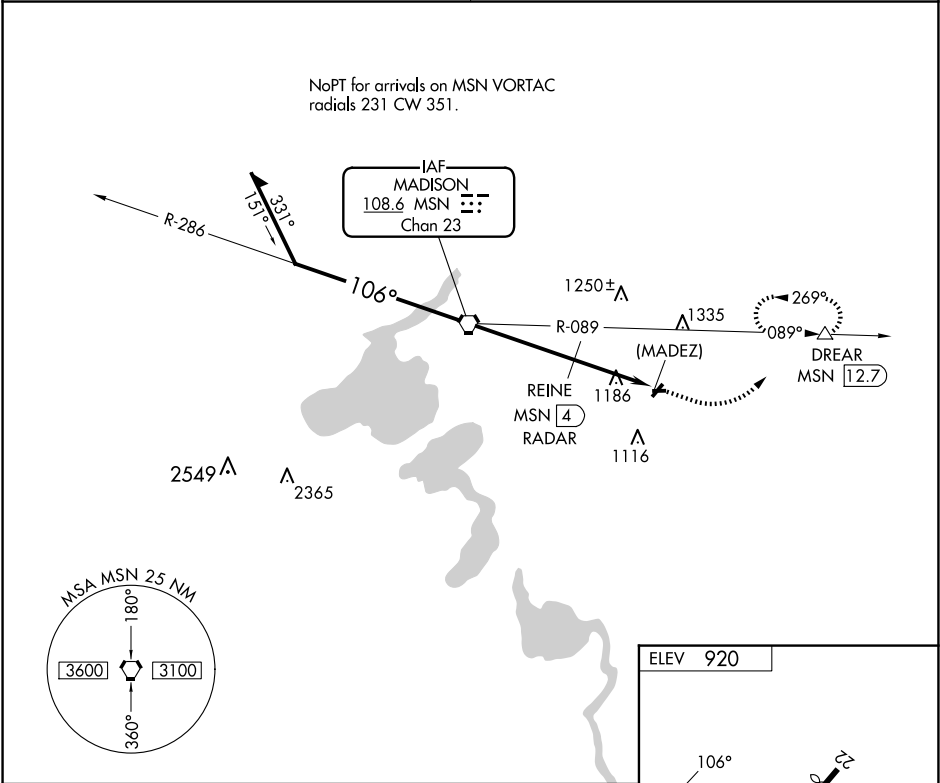
VORTAC	MSN	APP CRS	Rwy Idg	N/A
108.6	106°	TDZE	N/A	N/A
Chan 23		Apt Elev	920	

VOR or GPS-A

BLACKHAWK AIRFIELD (87Y)

<div><div><div>NA</div><div>-24°C</div></div></div> <div>Use Dane County Rgnl-Truax Fld altimeter setting. DME required.</div>	MISSED APPROACH: Climb to 2000 then climbing left turn to 3500 via heading 045° and MSN R-089 to DREAR/MSN 12.7 DME and hold.
--	---

MADISON APP CON* 120.1 343.7	UNICOM 122.7 (CTAF)
---------------------------------	------------------------



Remain within 10 NM

MSN VORTAC

2000

3500

hdg 045°

MSN R-089

DREAR MSN 12.7

3500

286°

106°

3500

REINE MSN 4 RADAR

(MADEZ) MSN 7.1

2500

4 NM

3.1 NM

CATEGORY	A	B	C	D
<b>C</b> CIRCLING	2500-1¼ 1580 (1600-1¼)	2500-1½ 1580 (1600-1½)	NA	
REINE FIX MINIMUMS				
<b>C</b> CIRCLING	1520-1 600 (600-1)	1560-1 640 (700-1)	NA	

281 X 57

0.5% up

0.7% up

2203 X 56

LIRL Rwy 9-27

FAF to MAP 7.1 NM

Knots	60	90	120	150	180
Min:Sec	7:06	4:44	3:33	2:50	2:22