

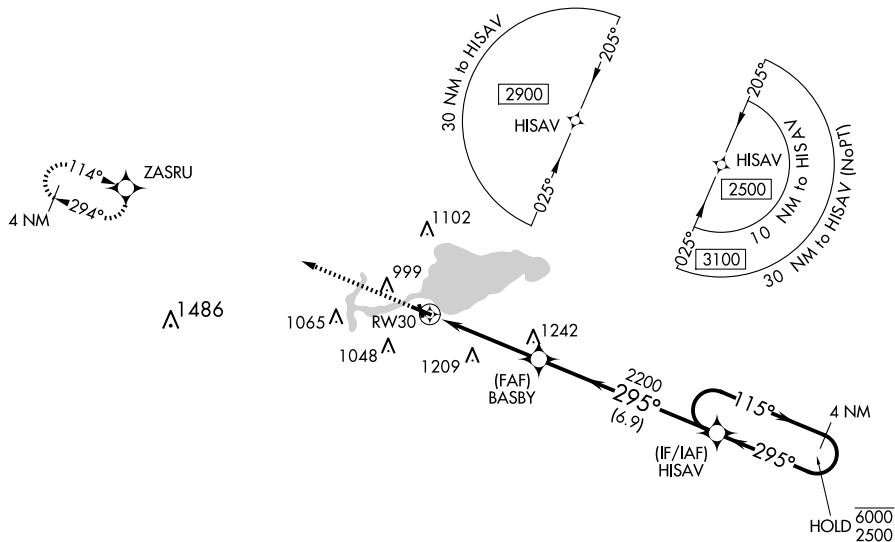
25107

RNAV (GPS) RWY 30
SHAWANO MUNI (E2S)

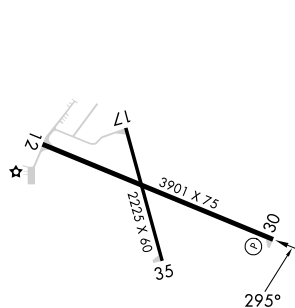
T Rwy 30 helicopter visibility reduction below $\frac{3}{4}$ SM NA. For uncompensated Baro-VNAV systems,
A LNAV/VNAV NA below -16°C or above 54°C. Circling to Rwy 12, 35 NA at night.

MISSED APPROACH:
Climb to 2700 direct
ZASRU and hold.

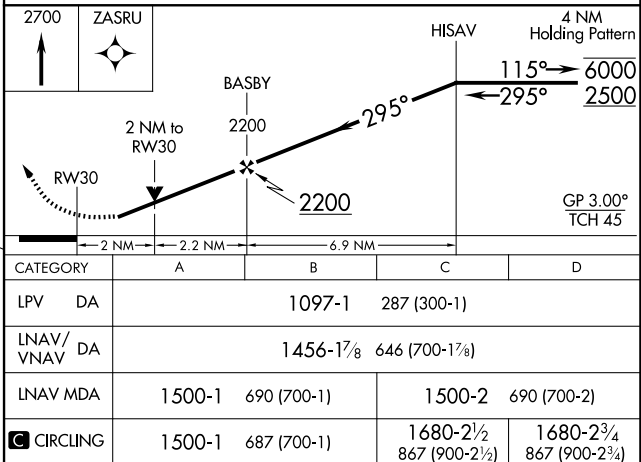
AWOS-3 118.65	GREEN BAY APP CON ★ 119.4 338.2	UNICOM 122.8 (CTAF) 0
-------------------------	---	---------------------------------



ELEV 813		TDZE 810
----------	--	----------



WATER ALL-WAY:
12000 X 1000

REIL Rwy 30 **L**

Orig-C 02DEC21

SHAWANO MUNI (EVS)

44°47'N-88°34'W

RNAV (GPS) RWY 30

EC-3, 10 JUL 2025 to 07 AUG 2025