

APP CRS	Rwy Idg	3498
142°	TDZE	1610
	Apt Elev	1610

RNAV (GPS) RWY 14

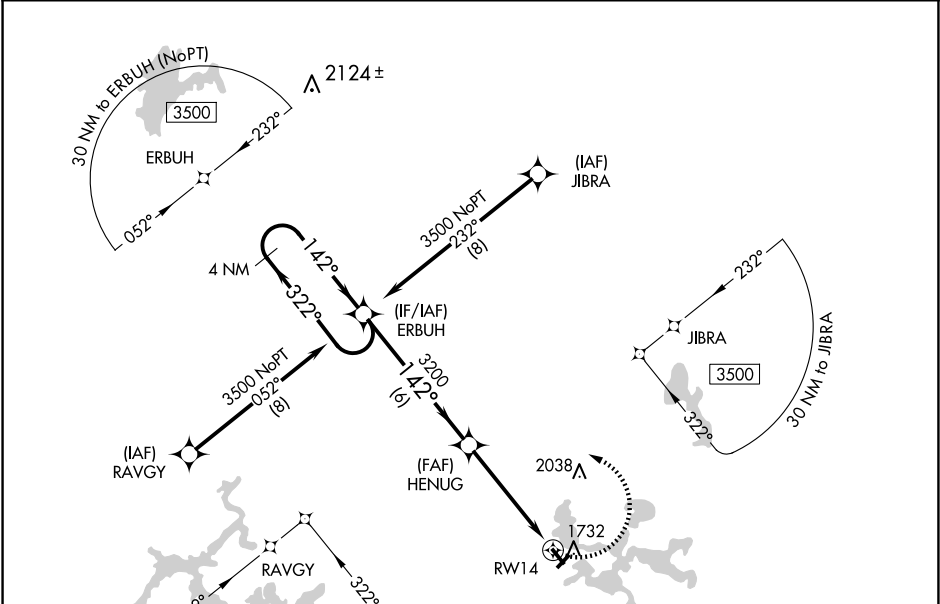
MANITOWISH WATERS (D25)

⚠

Circling NA to Rwys 4 and 22. DME/DME RNP-0.3 NA. Procedure NA at night. Rwy 14 helicopter visibility reduction below 1 SM NA. When local altimeter setting not received, use Minocqua-Woodruff altimeter setting; increase all MDA 40 feet, increase LNAV Cat C visibility ½ mile and Circling Cat C visibility ¼ mile.

MISSED APPROACH:
Climbing left turn to 3500
direct ERBUH and hold.

AWOS-3PT 118.175	MINNEAPOLIS CENTER 133.65 281.5	UNICOM 122.8 (CTAF) 0
---------------------	------------------------------------	--------------------------



ELEV 1610

TDZE 1610

142°

3200

3498 x 40

3994 x 120

32

4 NM Holding Pattern

ERBUH

3500

322°

142°

142°

3200

3.04°

TCH 40

6 NM

4.8 NM

3500

ERBUH

3200

322°

142°

3200

3.04°

TCH 40

6 NM

4.8 NM

CATEGORY	A	B	C	D
LNAV MDA	2100-1	490 (500-1)	2100-1 3/8 490 (500-1 3/8)	NA
CIRCLING	2100-1	490 (500-1)	2340-2 730 (800-2)	NA

REIL Rwys 14 and 32 0
MIRL Rwy 14-32 0