

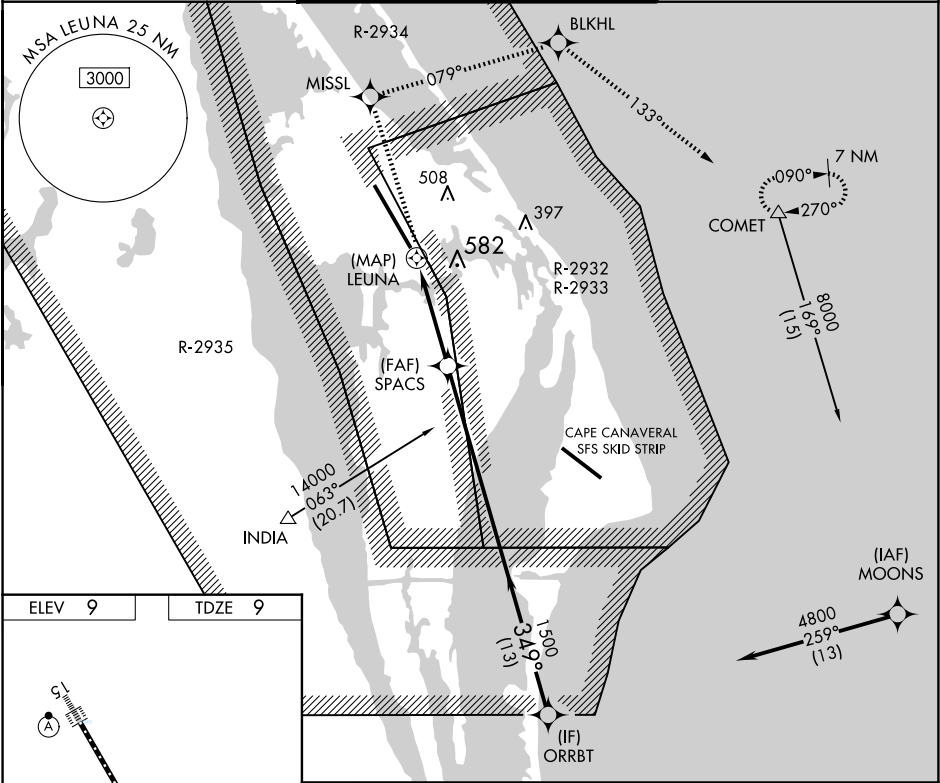
|         |          |       |
|---------|----------|-------|
| APP CRS | Rwy Idg  | 15001 |
| 349°    | TDZE     | 9     |
|         | Apt Elev | 9     |

RNAV (GPS) RWY 33

SPACE FLORIDA LAUNCH AND LANDING FACILITY (TTS)

|   |                                    |  |
|---|------------------------------------|--|
| RNP APCH-GPS.   | ALSF-2                             | MISSED APPROACH: Climb to 8000 direct MISSL and right turn on track 079° to BLKHL and on track 133° to COMET and hold, continue climb-in-hold to 8000. |
| <div><div>T</div><div>A</div><div>Rwy 33 helicopter visibility reduction below 1 SM NA.<br/>Inop table does not apply. Use Melbourne altimeter setting.</div></div> | <div><div>A</div><div></div></div> |  |

|                 |                     |         |
|-----------------|---------------------|---------|
| ORLANDO APP CON | NASA TOWER ★        | GND CON |
| 134.95 281.425  | 128.55 (CTAF) 284.0 | 121.75  |



|          |        |             |         |               |       |                   |
|----------|--------|-------------|---------|---------------|-------|-------------------|
| ELEV 9   | TDZE 9 | 8000        | MISSL   | BLKHL         | COMET | ORRBT             |
|          |        | ↑           | ★       | ★             | △     |                   |
|          |        |             | tr 079° | tr 133°       |       |                   |
|          |        | SPACS       |         |               |       | 4800              |
|          |        | LEUNA       |         |               |       | Procedure Turn NA |
|          |        | TCH 55      |         |               |       |                   |
|          |        | 1500        |         |               |       |                   |
|          |        | 349°        |         |               |       |                   |
|          |        | 0.5         |         |               |       | 4 NM              |
|          |        | 13 NM       |         |               |       |                   |
| CATEGORY | A      | B           | C       | D             | E     |                   |
| LNAV MDA | 540-1  | 530 (600-1) | 540-1¼  | 530 (600-1¼)  |       |                   |
| CIRCLING | 540-1  | 531 (600-1) | 1020-3  | 1011 (1100-3) |       |                   |