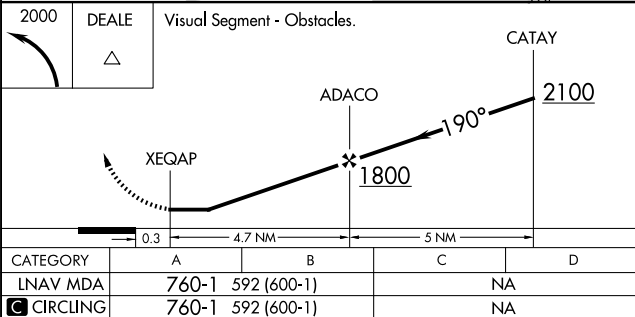
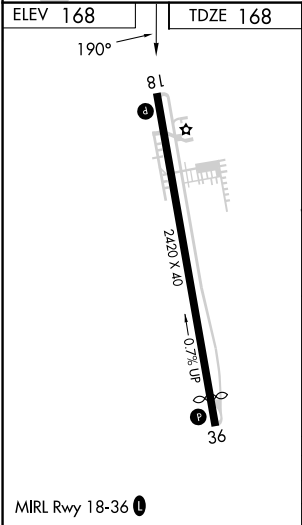
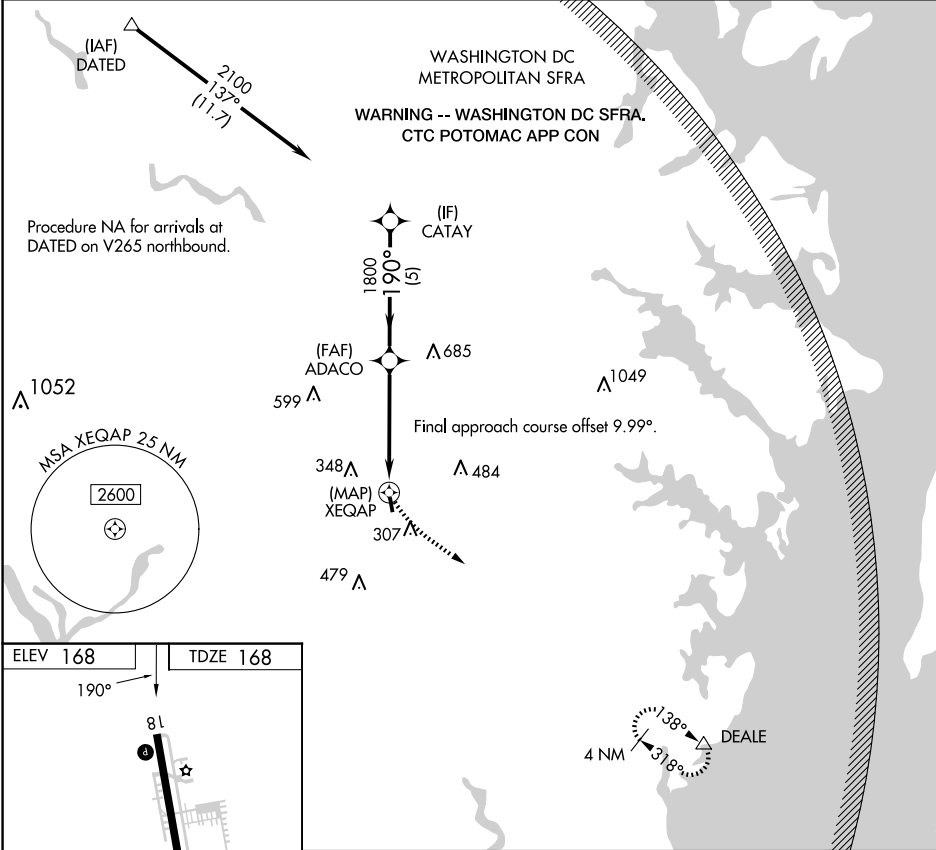


APP CRS	Rwy Idg	2420
	TDZE	168
	Apt Elev	168

RNAV (GPS) RWY 18
FREEWAY (W00)

<p>▼ Rwy 18 helicopter visibility reduction below 1 SM NA. DME/DME RNP-0.3 NA.</p> <p>▲ NA Procedure NA at night. Use Fort Meade (Odenton) altimeter setting; when not received, use College Park altimeter setting and increase all MDA 20 feet.</p>	<p>MISSED APPROACH: Climbing left turn to 2000 direct DEALE and hold.</p>
---	---

FME AWOS-3 123.925	POTOMAC APP CON 128.0 335.5	UNICOM 123.075 (CTAF) 0
-----------------------	--------------------------------	----------------------------



NE-3, 10 JUL 2025 to 07 AUG 2025

NE-3, 10 JUL 2025 to 07 AUG 2025