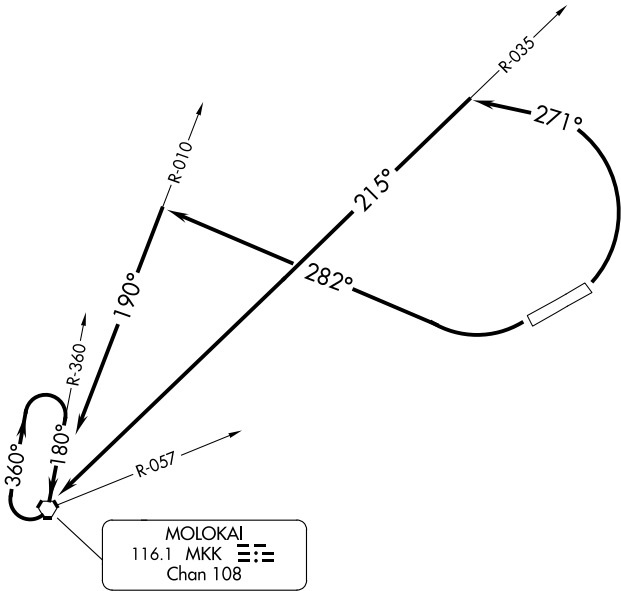


HCF CENTER  
124.1 317.5  
CTAF  
122.9



TAKEOFF MINIMUMS

- Rwy 5: Standard.
- Rwy 23: Standard with minimum climb of 400' per NM to 430 or 3200-3 for climb in visual conditions.

TAKEOFF OBSTACLE NOTES

- Rwy 5: Terrain beginning 52' from DER, 85' right of centerline, 27' MSL.  
Bush 286' from DER, 198' right of centerline, 17' AGL/34' MSL.
- Rwy 23: Bush 163' from DER, 92' right of centerline, 4' AGL/28' MSL.

NOTE: Chart not to scale

DEPARTURE ROUTE DESCRIPTION

**TAKEOFF RUNWAY 5:** Climbing left turn to 4000 heading 271° to intercept MKK R-035 to MKK VORTAC, Thence. . .

**TAKEOFF RUNWAY 23:** Climbing right turn to 4000 heading 282° to intercept MKK R-010 to MKK VORTAC, Thence. . . or for climb in visual conditions, cross Kalaupapa Airport southwest bound at or above 3100 MSL then proceed on MKK R-057 to MKK VORTAC.

. . .Climb in MKK VORTAC holding pattern to cross MKK VORTAC at or above MEA before proceeding enroute.