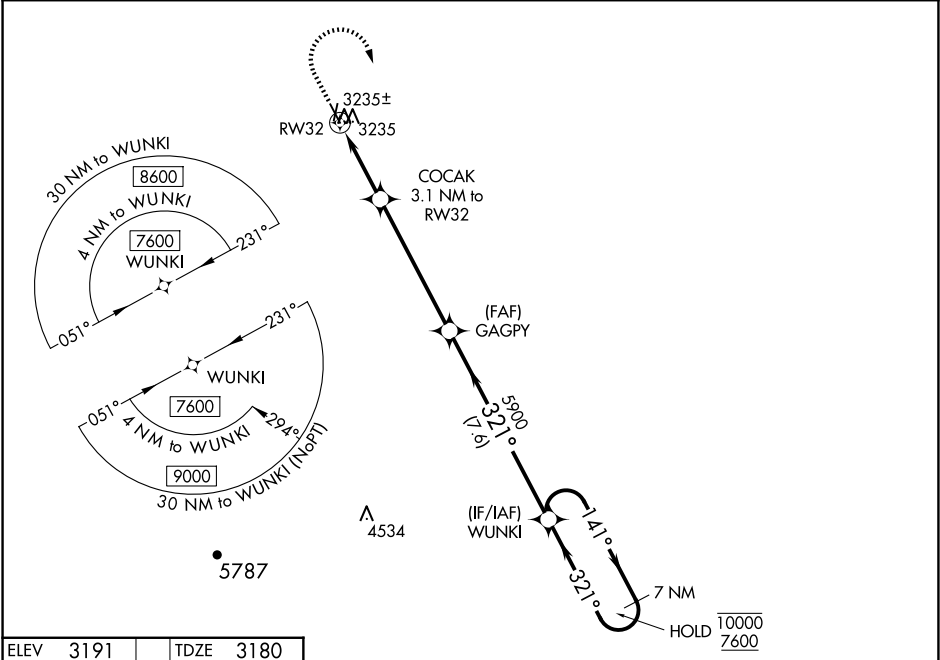


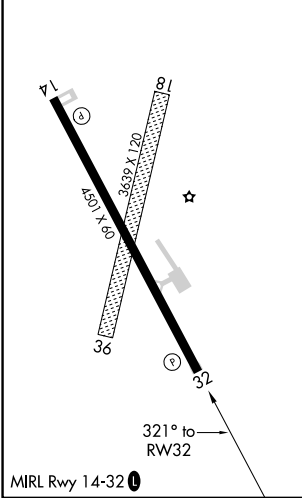
WAAS CH 82728 W32A	APP CRS 321°	Rwy Idg TDZE 3180 Apt Elev 3191
--	------------------------	---


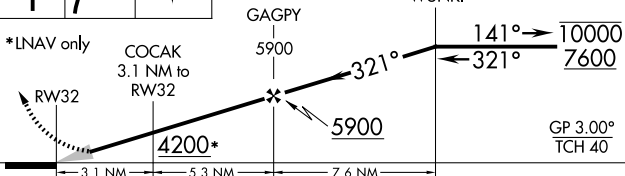

RNAV (GPS) RWY 32
BELLE FOURCHE MUNI (EFC)

RNP APCH.		MISSED APPROACH: Climb to 3800 then climbing right turn to 7600 direct WUNKI and hold. Continue climb-in-hold to 7600.
NA	Baro-VNAV NA. Use Ellsworth altimeter setting.	
DENVER CENTER 127.95 338.2		AUNICOM 122.8 (CTAF) 0



ELEV 3191	TDZE 3180
------------------	------------------



A 5266				
3800 ↑	7600 ↗	WUNKI 	VGSI and RNAV glidepath not coincident (VGSI Angle 3.00/TCH 33). 7 NM Holding Pattern	
				
CATEGORY	A	B	C	D
LPV DA	3553-1 373 (400-1)			NA
LNAV/ VNAV DA	3558-1 378 (400-1)			NA
LNAV MDA	3660-1	480 (500-1)	3660-1 $\frac{3}{8}$ 480 (500-1 $\frac{3}{8}$)	NA
 CIRCLING	3780-1 589 (600-1)	3820-1 629 (700-1)	3820-1 $\frac{3}{4}$ 629 (700-1 $\frac{3}{4}$)	NA

NC-1, 10 JUL 2025 to 07 AUG 2025

NC-1, 10 JUL 2025 to 07 AUG 2025