

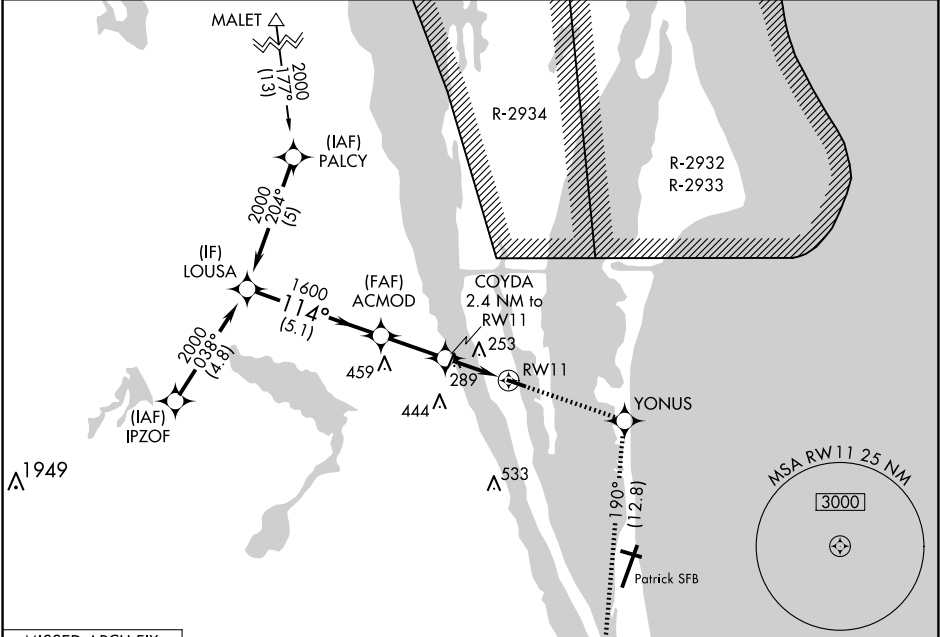
WAAS CH <b>65899</b> <b>W11A</b>	APP CRS <b>114°</b>	Rwy Idg TDZE Apt Elev	<b>3601</b> <b>6</b> <b>6</b>
--	------------------------	-----------------------------	-------------------------------------

RNAV (GPS) RWY 11

MERRITT ISLAND (COI)

RNP APCH.	MISSED APPROACH: Climb to 3000 direct YONUS and on track 190° to MLB VOR/DME and hold.
▼ Rwy 11 helicopter visibility reduction below 1 SM NA. When local altimeter setting not received, use Melbourne altimeter setting and increase LPV DA to 329 and all MDA 40 feet, increase LPV all Cats visibility 1/8 mile. Night landing: Rwy 11 NA.	

AWOS-3PT <b>119.025</b>	ORLANDO APP CON <b>134.95 281.425</b>	UNICOM <b>122.975 (CTAF) 0</b>
----------------------------	--	-----------------------------------



Procedure NA for arrivals on MLB VORTAC airway radials 276 CW 329.

ELEV 6	TDZE 6
--------	--------

VGSI and RNAV glidepath not coincident (VGSI Angle 3.00/TCH 42).			
LOUSA	ACMOD	COYDA	MLB
2000	1600	2.4 NM to RW11	
GP 3.00° TCH 33	114°	1600	*LNAV only.
5.1 NM	2.4 NM	2.4 NM	
CATEGORY	A	B	C
LPV DA	291-1	285 (300-1)	NA
LNAV MDA	600-1	594 (600-1)	NA
CIRCLING	600-1	620-1	NA
	594 (600-1)	614 (700-1)	

