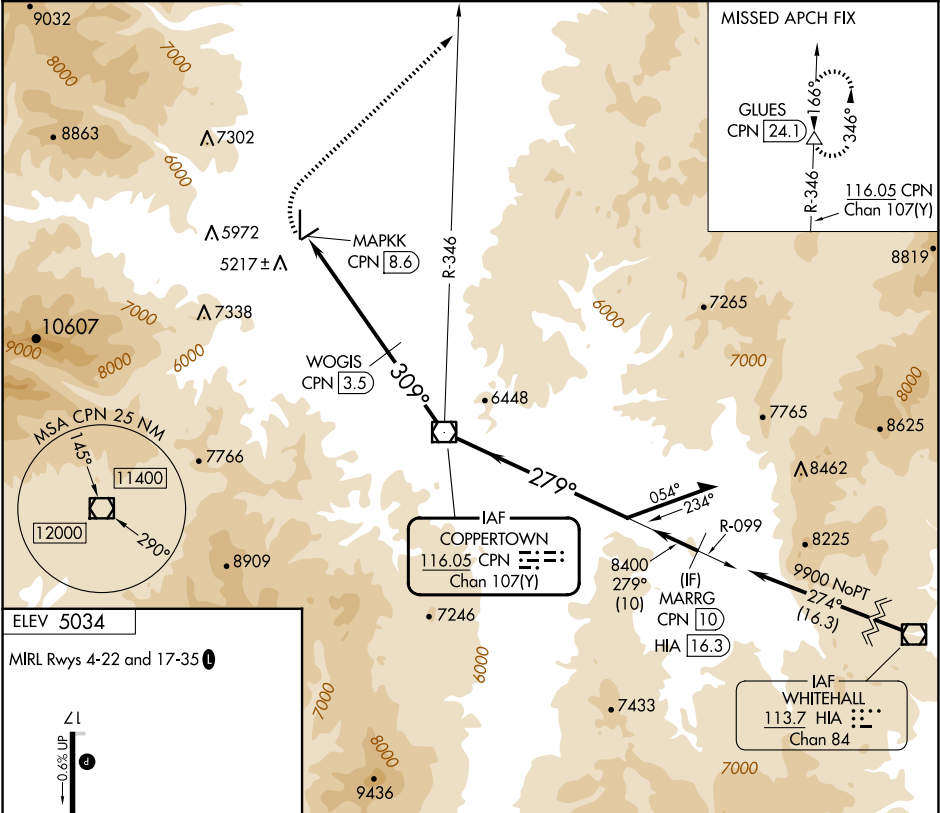


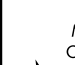


VOR/DME CPN <b>116.05</b> Chan <b>107 (Y)</b>	APP CRS <b>309°</b>	Rwy Idg TDZE Apt Elev <b>N/A</b> <b>N/A</b> <b>5034</b>	<b>VOR-A</b> BOWMAN FLD (3U3)
---	------------------------	--	----------------------------------

DME required.	MISSED APPROACH: Climbing right turn to 9200 on heading 030° and on CPN VOR/DME R-346 to GLUES/CPN 24.1 DME and hold.
<div><div>▼</div><div>▲ NA</div><div>❄ -25°C</div></div> <div>When local altimeter settings not received, use Butte altimeter setting and increase all MDAs 120 feet. Circling NA for Cats C and D west of Rwy 17-35.</div>	

AWOS-3PT <b>124.175</b>	SALT LAKE CENTER <b>132.4 338.3</b>	UNICOM <b>122.8 (CTAF) 1</b>
----------------------------	--	---------------------------------



		CPN R-346	GLUES △	CPN VOR/DME	Remain within 10 NM		
		MAPKK CPN 8.6	WOGIS CPN 3.5	309° 7440	279° 8400	10200	
	5.1 NM		3.5 NM				
	CATEGORY	A	B	C	D		
CIRCLING	6120-1¼ 1086 (1100-1¼)	6240-1½ 1206 (1300-1½)	6240-3	1206 (1300-3)			