

APP CRS 311°	Rwy Idg TDZE Apt Elev	N/A N/A 5034
------------------------	-----------------------------	---

RNAV (GPS)-B
BOWMAN FLD (3U3)

RNP APCH - GPS.



When local altimeter setting not received, use Butte altimeter setting and increase all MDAs 120 feet. Circling NA for Cats C and D west of Rwy 17-35.

MISSED APPROACH: Climbing right turn to 9200 direct GLUES and hold.

AWOS-3PT 124.175	SALT LAKE CENTER 132.4 338.3	UNICOM 122.8 (CTAF) 0
----------------------------	--	---------------------------------

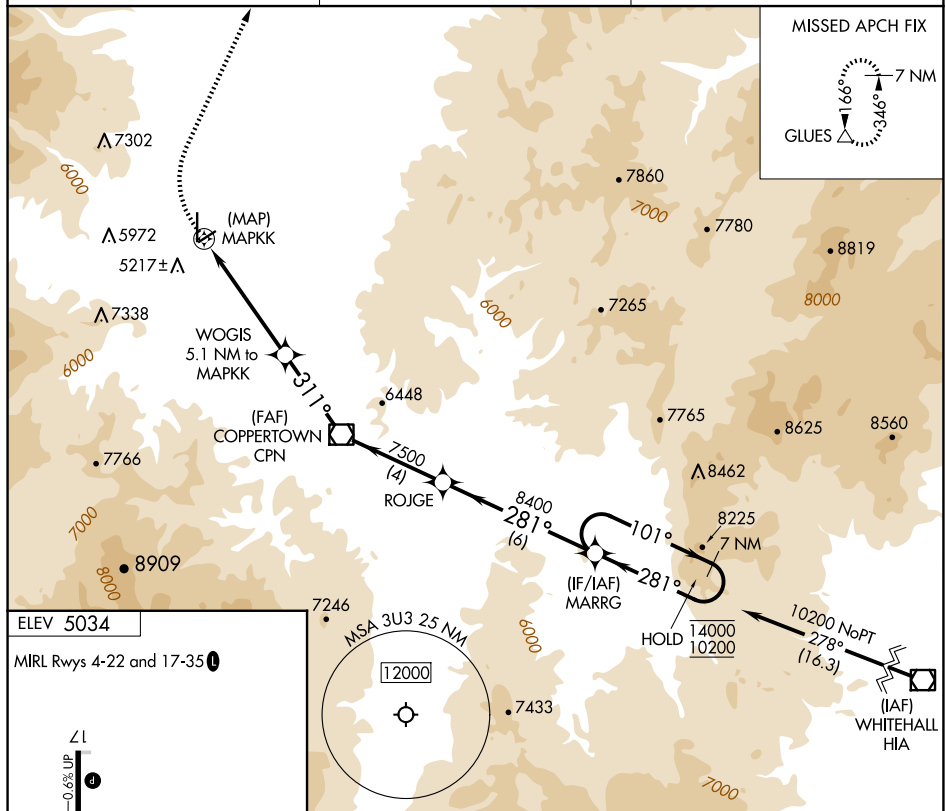


Diagram illustrating the MRL Rwy 22 and 17-35 intersection. The diagram shows a vertical runway (22) and a diagonal runway (17-35) intersecting. Runway 22 is 6010 x 75 feet, with a 0.6% upward slope. Runway 17-35 is 4074 x 60 feet, with a 1.0% upward slope. The intersection is marked with a star. A 311-degree bearing is indicated for the diagonal runway.

CATEGORY	A	B	C	D
CIRCLING	6120-1¼ 1086 (1100-1¼)	6240-1½ 1206 (1300-1½)	6240-3 1206 (1300-3)	6640-3 1606 (1700-3)