

APP CRS  
281°

Rwy Idg	<b>3705</b>
TDZE	<b>686</b>
Apt Elev	<b>686</b>

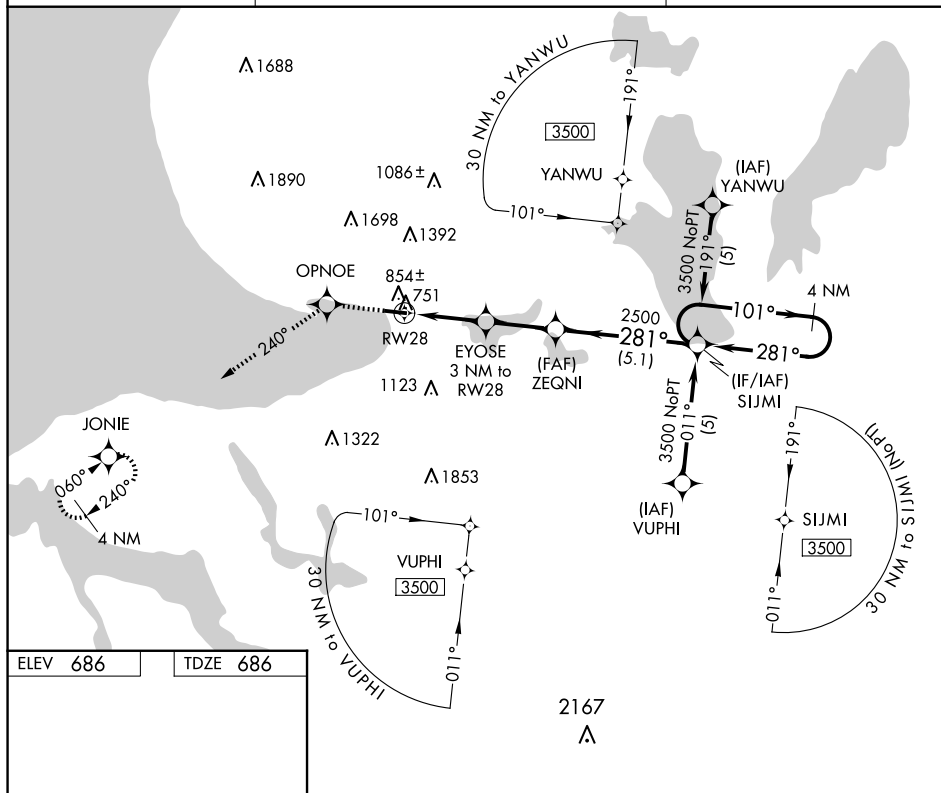
RNAV (GPS) RWY 28  
HARBOR SPRINGS (MGN)

DME/DME RNP-0.3 NA. Helicopter visibility reduction below 1 SM NA. When local altimeter setting not received, use Pellston altimeter setting and increase all MDAs 40 feet. Procedure NA at night.

**MISSED APPROACH:** Climb to 3400 direct  
OPNOE and via 240° track to JONIE and hold.

AWOS-3P  
**119.925**

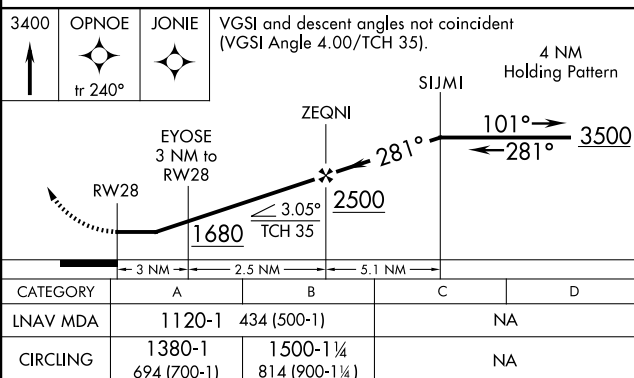
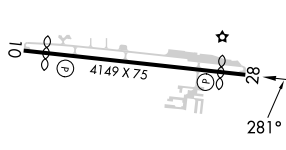
MINNEAPOLIS CENTER  
134.6 354.05

UNICOM  
122.8 (CTAF) **L**

EC-1, 10 JUL 2025 to 07 AUG 2025

ELEV 686

TDZE 686



HARBOR SPRINGS, MICHIGAN

Amdt 2A 28APR16

45°26'N - 84°55'W

HARBOR SPRINGS (MGN)

RNAV (GPS) RWY 28