

APP CRS  
101°

Rwy Idg	<b>3712</b>
TDZE	<b>679</b>
Apt Elev	<b>686</b>

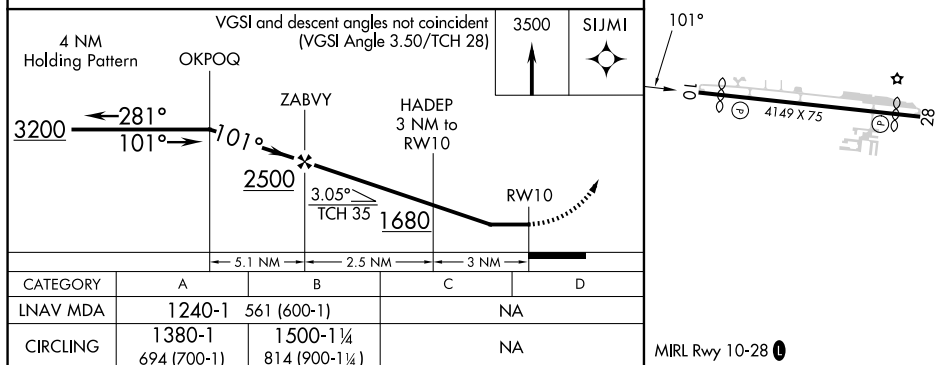
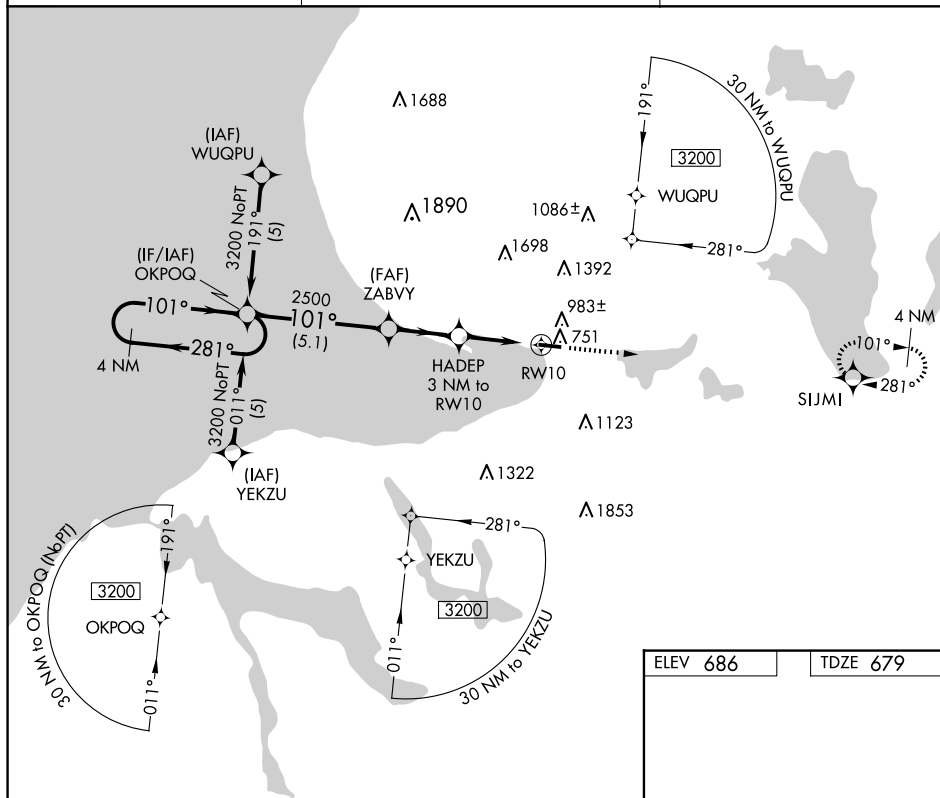
RNAV (GPS) RWY 10  
HARBOR SPRINGS (MGN)

**T** DME/DME RNP-0.3 NA. When local altimeter setting not received, use  
**A** Pellston altimeter setting and increase all MDAs 40 feet. Procedure NA  
at night. Helicopter visibility reduction below 1 SM NA.

**MISSED APPROACH:** Climb to 3500 direct SIJMI and hold.

AWOS-3P  
**119.925**

MINNEAPOLIS CENTER  
134.6 354.05

UNICOM  
122.8 (CTAF) **L**

HARBOR SPRINGS, MICHIGAN  
Amdt 1A 28APR16

45°26'N - 84°55'W

HARBOR SPRINGS (MGN)  
RNAV (GPS) RWY 10