

WAAS CH 50229 W36A	APP CRS 002°	Rwy Idg TDZE 1304 Apt Elev 1305
--	------------------------	---

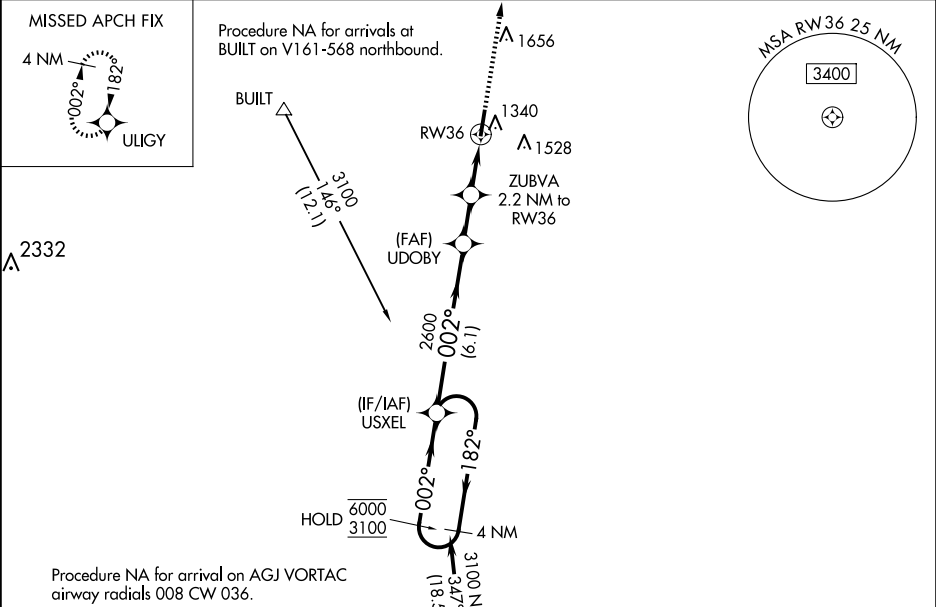
RNAV (GPS) RWY 36
HAMILTON MUNI (MNZ)

RNP APCH-GPS.

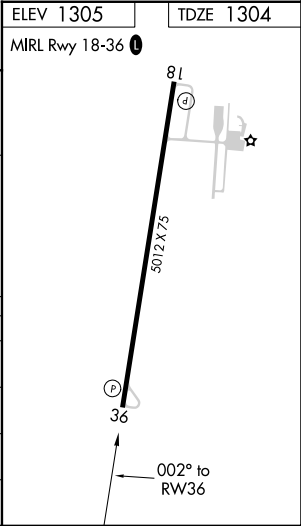
▼ Rwy 36 helicopter visibility reduction below ¾ SM NA.
For uncompensated Baro-VNAV systems, LNAV/VNAV NA
below -17°C or above 54°C.

MISSED APPROACH: Climb to 3600 direct ULIGY and hold.

AWOS-3PT 118.525	GRAY APP CON 120.075 323.15	UNICOM 122.7 (CTAF) 0
----------------------------	---------------------------------------	---------------------------------



4 NM Holding Pattern		USXEL		3600 ULIGY	
6000 ← 182°		2600		*LNAV only.	
3100 → 002°		2600		*2040	
GP 3.00° TCH 40		2600		*0.8 NM to RWY 36	
		6.1 NM		1.8 NM	
		1.4 NM		0.8	
CATEGORY	A	B	C	D	
LPV DA	1554-1	250 (300-1)		NA	
LNAV/VNAV DA	1554-1	250 (300-1)		NA	
LNAV MDA	1600-1	296 (300-1)		NA	
CIRCLING	1680-1 375 (400-1)	1840-1 535 (600-1)	1960-1¾ 655 (700-1¾)	NA	



SC-3, 10 JUL 2025 to 07 AUG 2025

SC-3, 10 JUL 2025 to 07 AUG 2025