

SE-2, 10 JUL 2025 to 07 AUG 2025

ELIZABETHTOWN, NORTH CAROLINA

AL-6982 (FAA)

24081

VOR/DME FAY 114.85 Chan 95(Y)	APP CRS 152°	Rwy Idg TDZE Apt Elev	5006 132 132
--	------------------------	-----------------------------	---

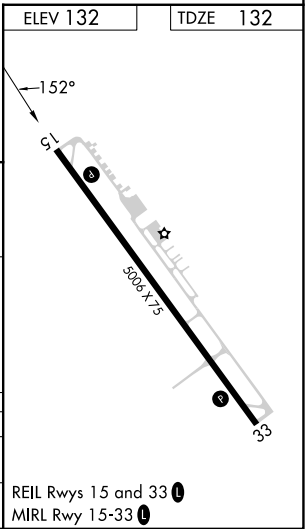
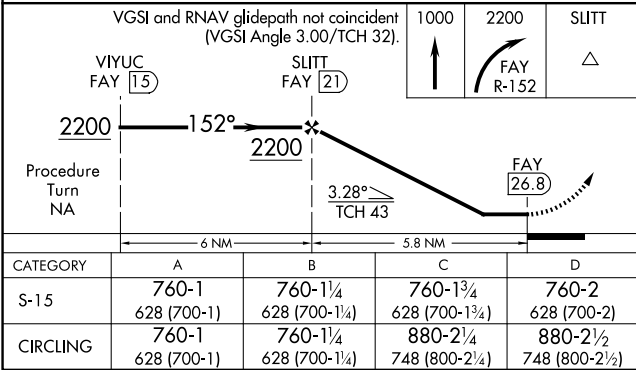
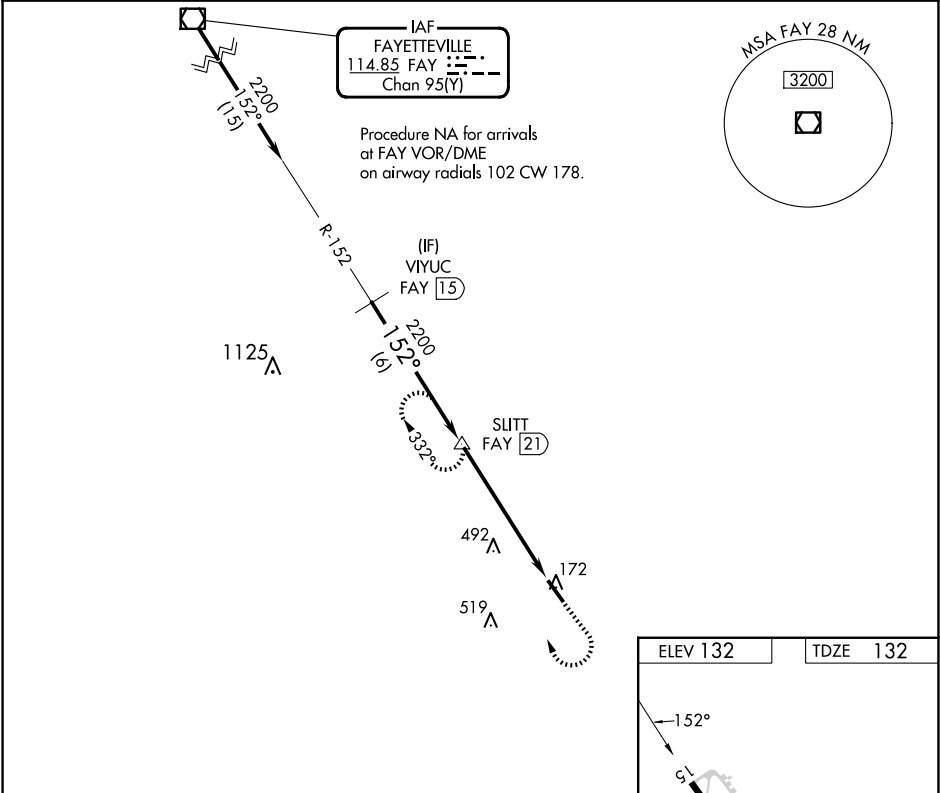
VOR/DME RWY 15
CURTIS L BROWN JR FLD (EYF')

- ▼

▲
- Visibility reduction by helicopters NA. When local altimeter setting not received, use Fayetteville altimeter setting; increase all MDA 80 feet and increase S-15 Cats C and D and Circling Cat C and D visibility ¼ SM.

MISSED APPROACH: Climb to 1000 then climbing right turn to 2200 on FAY R-152 to SLITT/21 DME and hold.

AWOS-3P 119.475	FAYETTEVILLE APP CON 133.0 290.25	UNICOM 122.8 (CTAF) 0
---------------------------	---	---------------------------------



ELIZABETHTOWN, NORTH CAROLINA
Amdt 2A 22APR21

34°36'N-78°35'W

CURTIS L BROWN JR FLD (EYF')
VOR/DME RWY 15

SE-2, 10 JUL 2025 to 07 AUG 2025