

WAAS CH 58244 W36A	APP CRS 360°	Rwy Idg TDZE Apt Elev	6001 1301 1316
--	------------------------	-----------------------------	---

RNAV (GPS) RWY 36
MONETT RGNL (HFJ)

RNP APCH - GPS.

V Baro-VNAV and VDP NA when using Joplin altimeter setting. For uncompensated
A Baro-VNAV systems, LNAV/VNAV NA below -17°C or above 54°C. When local
altimeter setting not received, use Joplin altimeter setting: increase LPV DA to 1613 feet;
increase LNAV/VNAV DA to 1862 feet and all visibilities $\frac{3}{8}$ SM; increase all MDAs
120 feet and LNAV visibility Cats C and D $\frac{3}{8}$ SM, and Circling visibility Cat C/D $\frac{1}{2}$ SM.

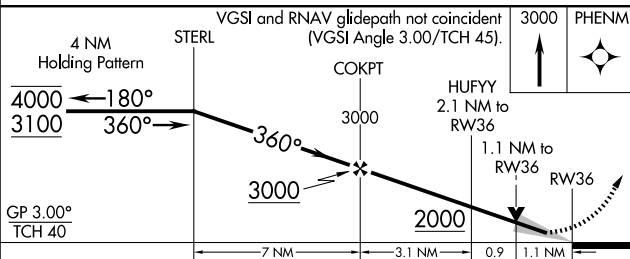
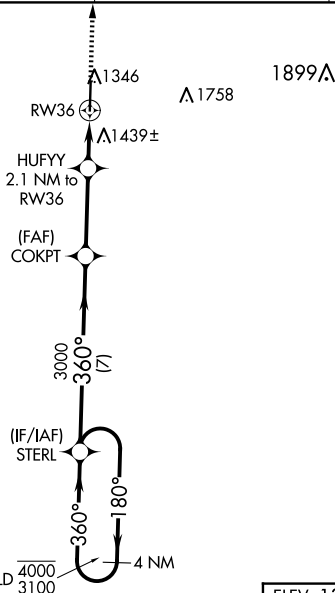
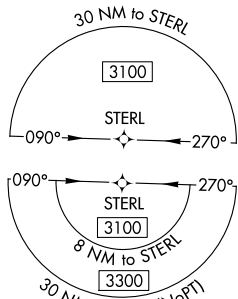
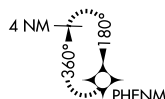
MALSR




MISSED APPROACH:
Climb to 3000 direct
PHENM and hold.

AWOS-3 118.275	SPRINGFIELD APP CON 124.95 318.2	CLNC DEL 121.85	UNICOM 123.075 (CTAF) 0
--------------------------	--	---------------------------	-----------------------------------

MISSED APCH FIX



CATEGORY	A	B	C	D
LPV DA	1501-1/2 200 (200-1/2)			
LNAV/ VNAV DA	1750-7/8 449 (500-7/8)			
LNAV MDA	1700-1/2 399 (400-1/2)		1700-5/8 399 (400-5/8)	
 CIRCLING	1760-1 444 (500-1)	1900-1 584 (600-1)	1900-1 1/2 584 (600-1 1/2)	2060-2 1/2 744 (800-2 1/2)

ELEV 1316

TDZE 1301

HIRL Rwy 18-36

REIL Rwy 18

81

6001 X 100

0.3% UP

36

360°

P

A5

☆