

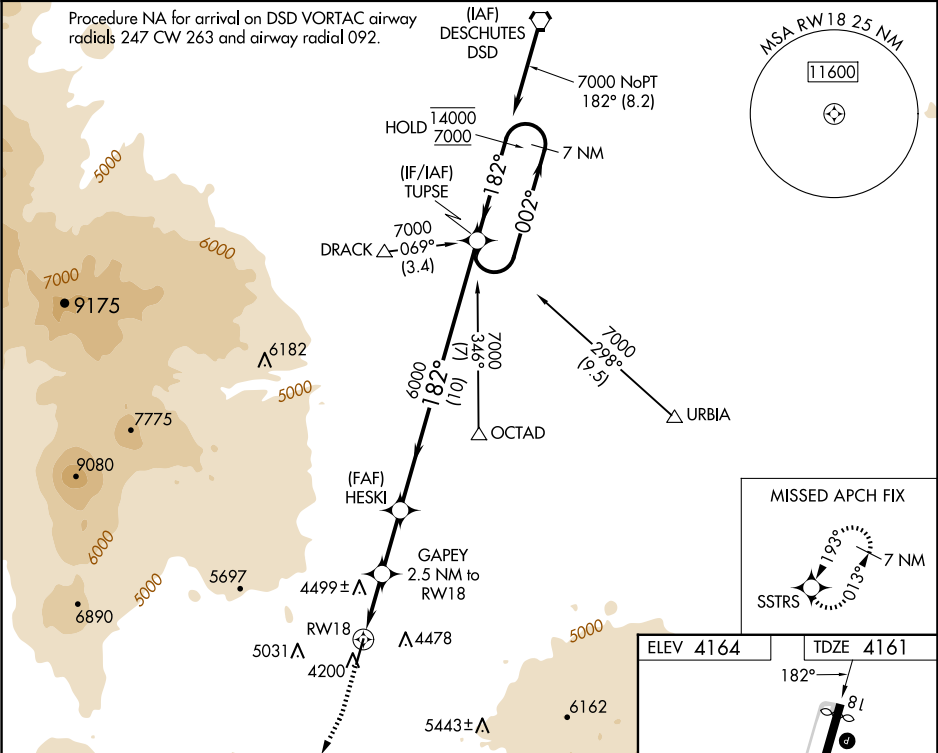
WAAS CH 77744 W18A	APP CRS 182°	Rwy Ldg TDZE 4161 Apt Elev 4164
--	------------------------	---




RNAV (GPS) RWY 18

SUNRIVER (S21)

RNP APCH - GPS.	MISSED APPROACH: Climb to 6000 then climbing right turn to 9400 direct SSTRS and hold, continue climb-in-hold to 9400.
<div><div></div><div></div></div> <div>Circling NA for Cat D west of Rwy 18-36. Rwy 18 helicopter visibility reduction below ¾ SM NA. For uncompensated Baro-VNAV systems, LNAV/VNAV NA below -23°C or above 41°C.</div>	

AWOS-3PT 128.325	SEATTLE CENTER 126.15 269.475	UNICOM 122.8 (CTAF) 0
----------------------------	---	---------------------------------



<div><div><div>6000</div><div>↑</div></div><div><div>9400</div><div></div></div><div><div>SSTRS</div><div></div></div></div>		<div><div><div><div>GAPEY</div><div>2.5 NM to RW18</div></div><div><div>1.5 NM to RW18</div><div></div></div></div><div><div><div>HESKI</div><div>6000</div></div><div><div>182°</div><div>6000</div></div></div><div><div><div>TUPSE</div><div>7 NM Holding Pattern</div></div><div><div>002°</div><div>14000</div><div>←182°</div><div>7000</div></div></div><div><div><div>1.5 NM</div><div>1 NM</div><div>2.4 NM</div><div>10 NM</div></div><div><div>5120</div><div>GP 3.50°</div><div>TCH 45°</div></div></div></div>			
CATEGORY	A	B	C	D	
LPV DA	4431-7/8 270 (300-7/8)				
LNAV/VNAV DA	4760-13/4 599 (600-13/4)				
LNAV MDA	4760-1 599 (600-1)		4760-13/4 599 (600-13/4)		
CIRCLING	4900-1 736 (800-1)	5140-11/2 976 (1000-11/2)	5660-3	1496 (1500-3)	

