

WAAS CH 48931 W17A	APP CRS 174°	Rwy Idg TDZE Apt Elev	5000 105 105
--	------------------------	-----------------------------	---

RNAV (GPS) RWY 17

YAZOO COUNTY (87I)

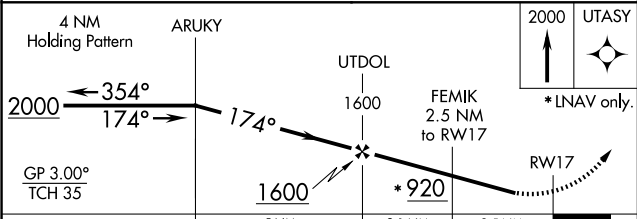
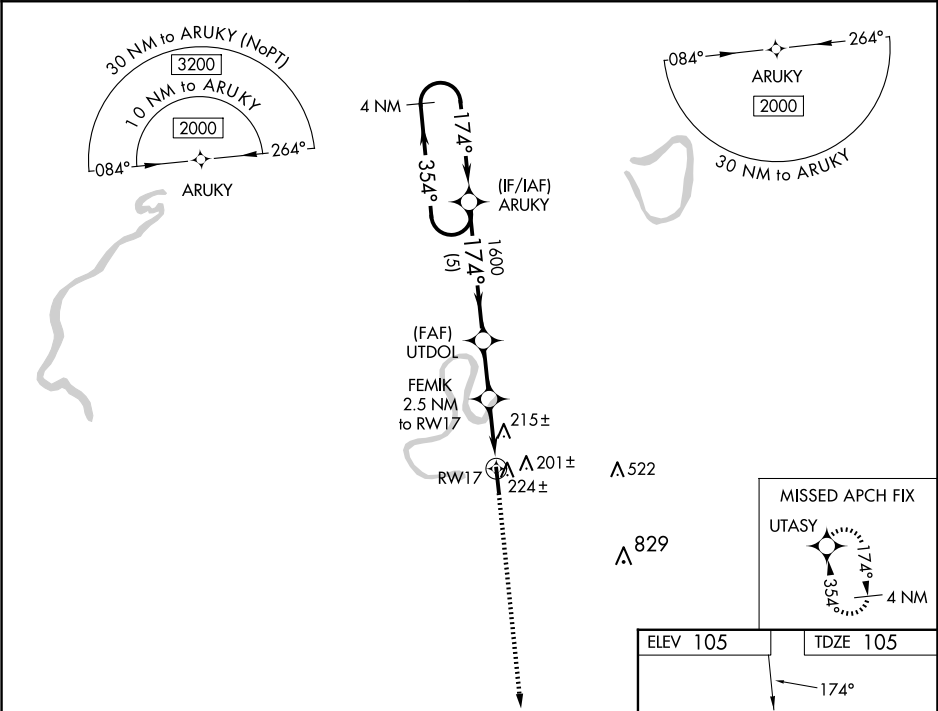
▼

▲ NA

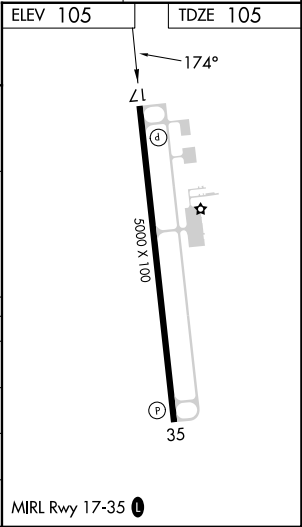
Baro-VNAV NA. Use Madison altimeter setting; when not received, use Jackson altimeter setting and increase all DA 8 feet and all MDA 20 feet; increase LNAV/VNAV visibility all Cats ½ mile. DME/DME RNP-0.3 NA. Helicopter visibility reduction below ¾ SM NA.

MISSED APPROACH: Climb to 2000 direct UTASY and hold.

MEMPHIS CENTER 132.5 259.1	UNICOM 122.8 (CTAF) 0
--------------------------------------	---------------------------------



CATEGORY	A	B	C	D
LPV DA		461-1¼	356 (400-1¼)	
LNAV/VNAV DA		622-1¾	517 (600-1¾)	
LNAV MDA	580-1 475 (500-1)		580-1¾ 475 (500-1¾)	
CIRCLING	640-1 535 (600-1)		640-1½ 535 (600-1½)	960-2¾ 855 (900-2¾)



SC-4, 10 JUL 2025 to 07 AUG 2025

SC-4, 10 JUL 2025 to 07 AUG 2025