

WAAS CH <b>72823</b> <b>W36A</b>	APP CRS <b>359°</b>	Rwy Idg TDZE <b>1115</b> Apt Elev <b>1115</b>	<b>4001</b>
--	------------------------	---	-------------

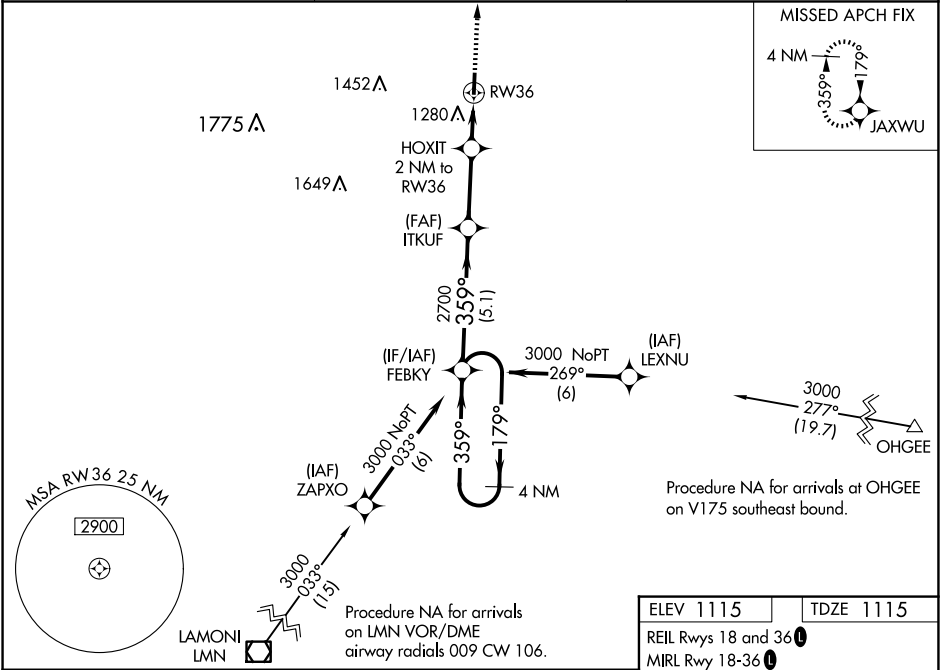
RNAV (GPS) RWY 36

OSCEOLA MUNI (I75)

**⚠** When VGSI inop, Circling Rwy 18 NA at night. Baro-VNAV NA when using Chariton altimeter setting. For uncompensated Baro-VNAV systems, LNAV/VNAV NA below -17°C (2°F) or above 54°C (130°F). DME/DME RNP-0.3 NA. VDP NA with Chariton altimeter setting. When local altimeter setting not received, use Chariton altimeter setting and increase all DA 44 feet and all MDA 60 feet. Increase LPV all Cats visibility to 1 mile and LNAV/VNAV all Cats visibility to 1¼ mile. Visibility reduction by helicopters NA.

MISSED APPROACH:  
Climb to 3000 direct JAXWU and hold.

AWOS-3 <b>120.975</b>	DES MOINES APP CON <b>123.9 360.7</b>	UNICOM <b>122.8 (CTAF) 0</b>
--------------------------	--	---------------------------------



NC-3, 10 JUL 2025 to 07 AUG 2025

NC-3, 10 JUL 2025 to 07 AUG 2025