

WAAS CH <b>53623</b> <b>W18A</b>	APP CRS <b>179°</b>	Rwy Idg TDZE <b>1115</b> Apt Elev <b>1115</b>	<b>4001</b> <b>1115</b> <b>1115</b>
--	------------------------	---	---

RNAV (GPS) RWY 18

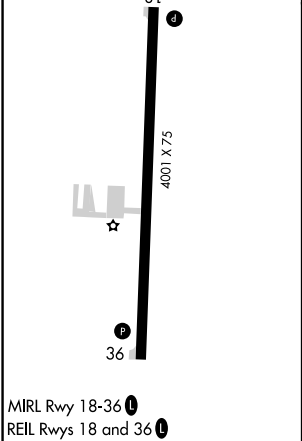
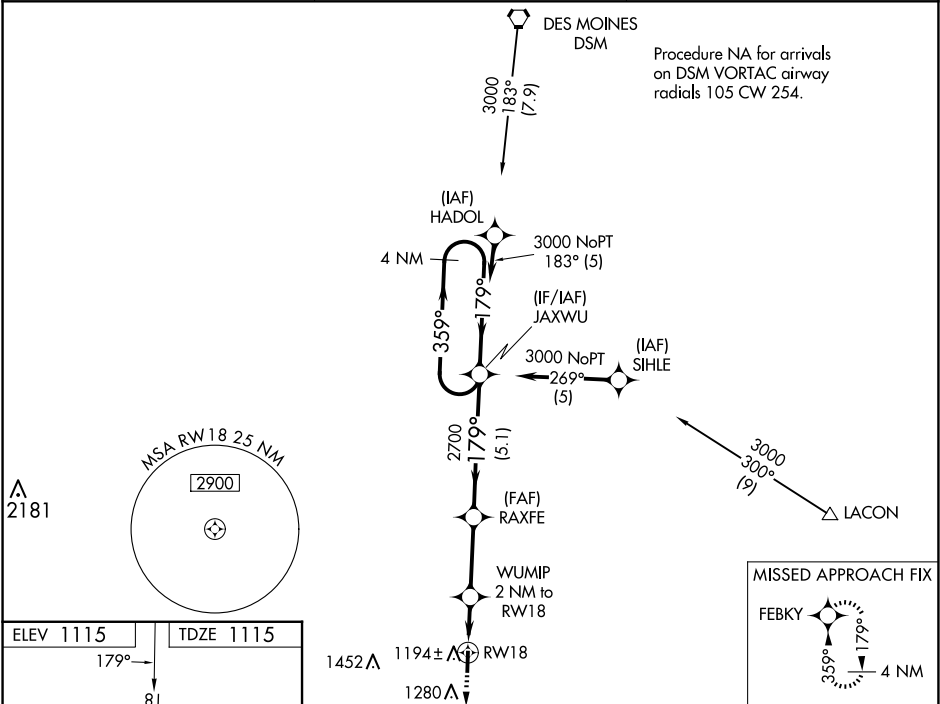
OSCEOLA MUNI (I75)

⚠

Baro-VNAV NA when using Chariton altimeter setting. For uncompensated Baro-VNAV systems, LNAV/VNAV NA below -17°C (2°F) or above 54°C (130°F). When VGSI inop, Straight-In/Circling Rwy 18 procedure NA at night. DME/DME RNP-0.3 NA. Visibility reduction by helicopters NA. When local altimeter setting not received, use Chariton altimeter setting and increase all DA 44 feet and all MDA 60 feet.

MISSED APPROACH:  
Climb to 3000 direct FEBKY and hold.

AWOS-3 <b>120.975</b>	DES MOINES APP CON <b>123.9 360.7</b>	UNICOM <b>122.8 (CTAF) 0</b>
--------------------------	--	---------------------------------



3000	FEBKY	VGSI and RNAV glidepath not coincident (VGSI angle 3.00/TCH 31).	JAXWU	4 NM Holding Pattern
*LNAV only.	WUMIP 2 NM to RW18	RAXFE	2700	359°
RW18	1780*	2700	179°	3000
2 NM	2.9 NM	5.1 NM		GP 3.00° TCH 40
CATEGORY	A	B	C	D
LPV DA	1365-1	250 (300-1)		NA
LNAV/VNAV DA	1365-1	250 (300-1)		NA
LNAV MDA	1460-1	345 (400-1)		NA
CIRCLING	1580-1	465 (500-1)		NA