

RNAV (GPS) RWY 18
KINGMAN/CLYDE CESSNA FLD (9K8)

T Rwy 18 helicopter visibility reduction below $\frac{3}{4}$ SM NA.
Circling Rwy 11, 29 NA at night.

MISSED APPROACH: Climb to 3600
direct BIRCA and hold.

AWOS-3PT 119.325	WICHITA APP CON 125.5 306.2	UNICOM 122.8 (CTAF) L
----------------------------	---------------------------------------	--

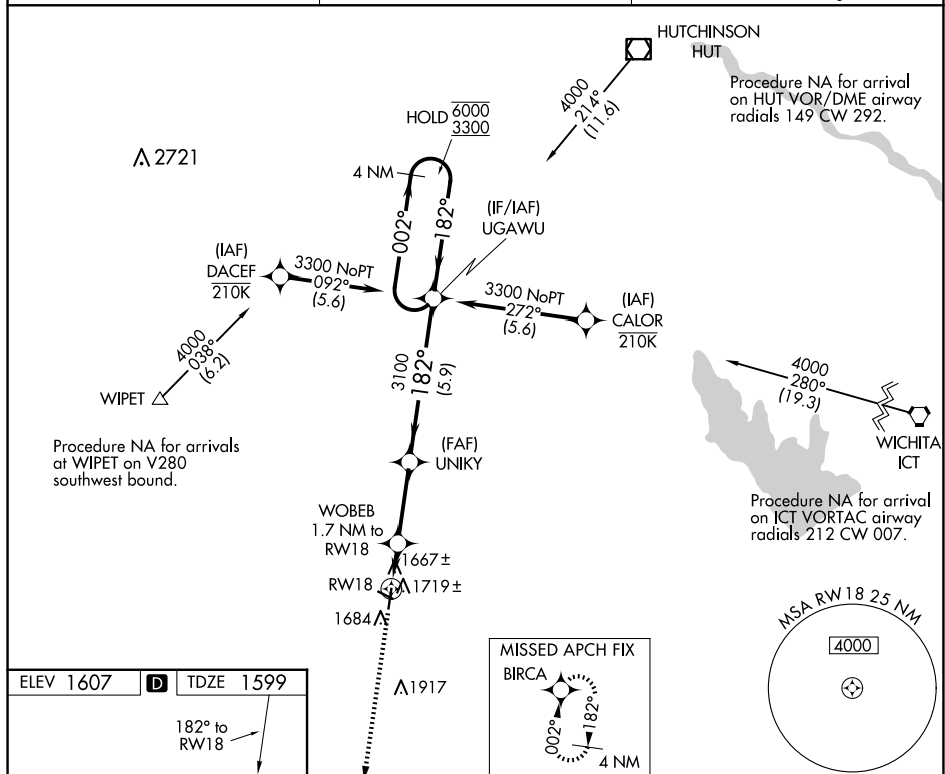


Figure 10 illustrates a 4 NM Holding Pattern. The diagram shows a holding pattern for RW18. The pattern is a series of turns around a fix (UNIKY). The distance from the fix to the start of the pattern is 0.9 NM. The distance between turns is 0.8 NM. The distance from the fix to the end of the pattern is 3.100 NM. The distance from the fix to the start of the pattern is 0.9 NM. The distance between turns is 0.8 NM. The distance from the fix to the end of the pattern is 3.100 NM. The distance from the fix to the start of the pattern is 0.9 NM. The distance between turns is 0.8 NM. The distance from the fix to the end of the pattern is 3.100 NM.

CATEGORY	A	B	C	D
LP MDA	1920-1 321 (400-1)			NA
LNAV MDA	1980-1 381 (400-1)		1980-1½ 381 (400-1½)	NA
C CIRCLING	2040-1 433 (500-1)	2060-1 453 (500-1)	2160-1½ 553 (600-1½)	NA