

HVQ VOR/DME

117.4

Chan

121

APP CRS

288°

Rwy Idg

TDZE

Apt Elev

N/A

N/A

572

VOR-A

ONA AIRPARK (12V)

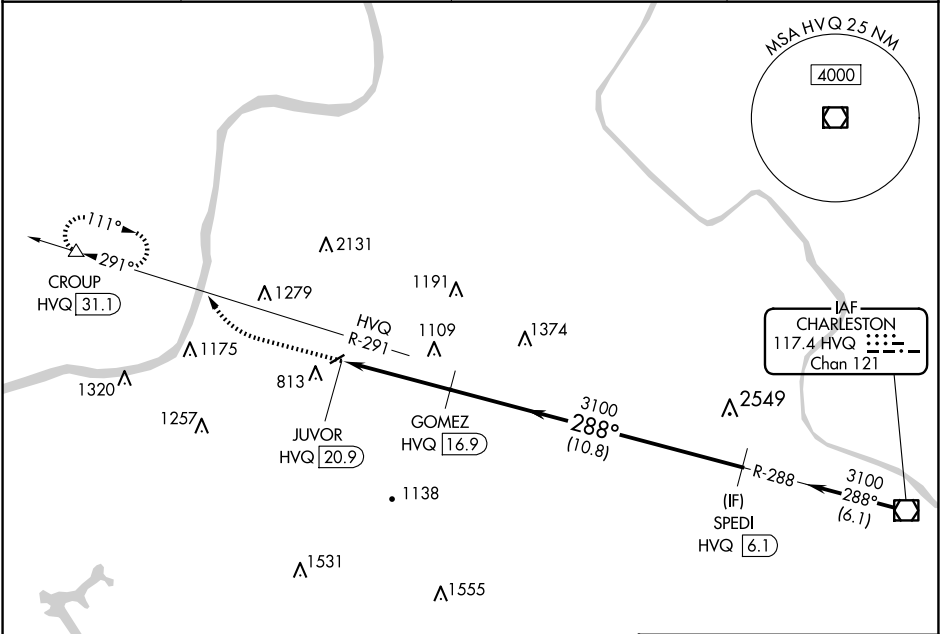
DME required.

NA

Circling NA northwest of Rwy 7-25. Procedure NA at night.
Use Huntington altimeter setting; when not received,
use Point Pleasant altimeter setting.

MISSED APPROACH: Climbing right turn
to 3200 on HVQ VOR/DME R-291 to
CROUP/HVQ VOR/DME 31.1 and hold.

| | | | |
|-------------------|--|---|------------------------|
| HTS ASOS 125.2 | CHARLESTON APP CON 124.1 269.125 (EAST) | HUNTINGTON APP CON 119.75 270.1 (WEST) | UNICOM 122.8 (CTAF) |
|-------------------|--|---|------------------------|



3200

HVQ R-291

CROUP

△

JUVOR

HVQ 20.9

GOMEZ

HVQ 16.9

SPEDI

HVQ 6.1

3100

288°

3100

4 NM

10.8 NM

| | | | | |
|----------|---------------------------|----|---|---|
| CATEGORY | A | B | C | D |
| CIRCLING | 1580-1¼ 1008 (1100-1¼) | NA | | |

ELEV 572

3154 X 40

288°

LIRL Rwy 7-25