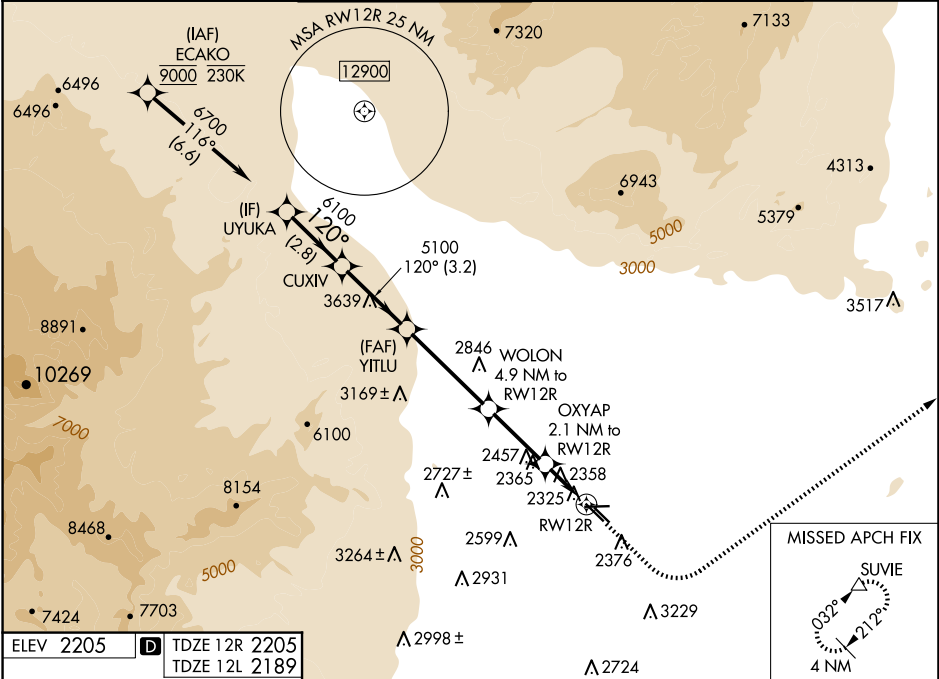


WAAS CH <b>69443</b> <b>W12A</b>	APP CRS <b>120°</b>	Rwy Ldg TDZE Apt Elev	12R <b>5000</b> <b>2205</b> <b>2205</b>	12L <b>4199</b> <b>2189</b> <b>2205</b>
--	------------------------	-----------------------------	--	--

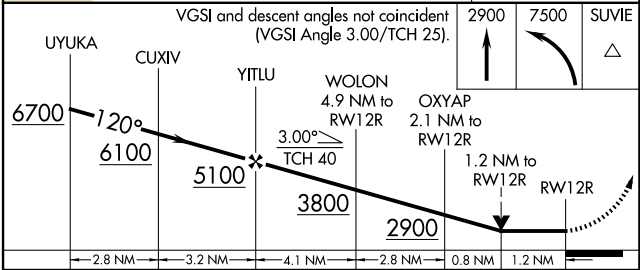
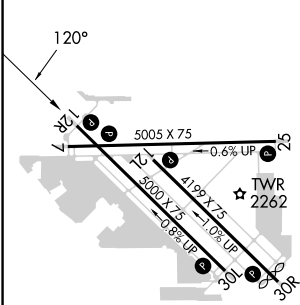
RNAV (GPS) RWY 12R  
NORTH LAS VEGAS (VGT)

RNP APCH - GPS.	MISSED APPROACH: Climb to 2900 then climbing left turn to 7500 direct SUVIE and hold, continue climb-in-hold to 7500.
▼ ▲ Rwy 12R helicopter visibility reduction below ¾ SM NA.	

ATIS <b>118.05</b>	LAS VEGAS APP CON <b>119.4 360.85</b>	NORTH LAS VEGAS TOWER * <b>125.7 (CTAF) 360.75</b>	GND CON <b>121.7</b>	CLNC DEL <b>124.0</b>	UNICOM <b>122.95</b>
-----------------------	--	---	-------------------------	--------------------------	-------------------------



ELEV 2205	TDZE 12R 2205
	TDZE 12L 2189



CATEGORY	A	B	C	D
LP MDA	2620-1	415 (500-1)	2620-1 1/8	415 (500-1 1/8)
LNAV MDA	2820-1	615 (700-1)	2820-1 3/4	615 (700-1 3/4)
SIDESTEP 12L	2820-1	631 (700-1)	2820-1 3/4	2820-2
			631 (700-1 3/4)	631 (700-2)
CIRCLING	2820-1	615 (700-1)	2840-1 3/4	3540-3
			635 (700-1 3/4)	1335 (1400-3)