

APP CRS  
352°

Rwy Idg  
TDZE  
Apt Elev

N/A  
N/A  
5157

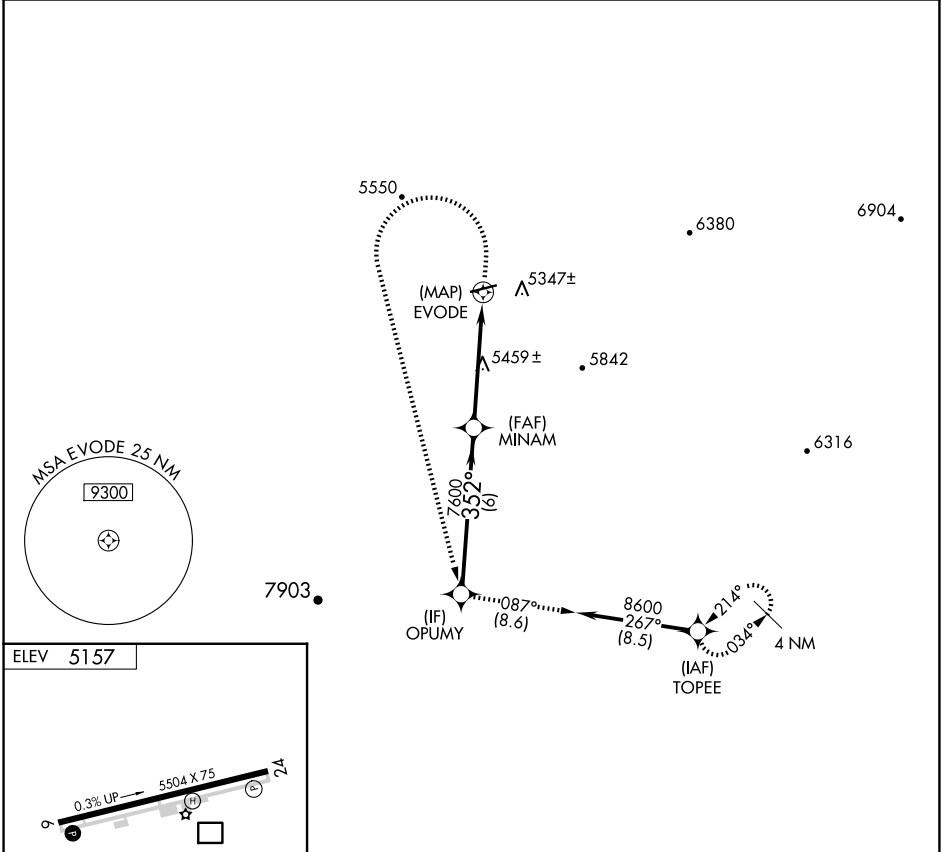
RNAV (GPS)-A  
PAYSON (PAN)

NA

GPS or RNP- 0.3 required. DME/DME RNP- 0.3 NA.

MISSED APPROACH: Climb to 6700 then climbing left turn to 9000 direct OPUMY WP and via 087° track to TOPEE WP and hold.

AWOS-3PT 119.325	ALBUQUERQUE CENTER 127.675 306.2	UNICOM 122.8 (CTAF)
---------------------	-------------------------------------	------------------------



OPUMY

8600

Procedure Turn NA

6700

9000

OPUMY

tr 087°

TOPEE

352°

MINAM

7600

EVODE

6 NM

4.9 NM

CATEGORY	A	B	C	D
CIRCLING	5700-1 543 (600-1)	5760-1 603 (700-1)	5860-2 703 (800-2)	6060-3 903 (1000-3)