

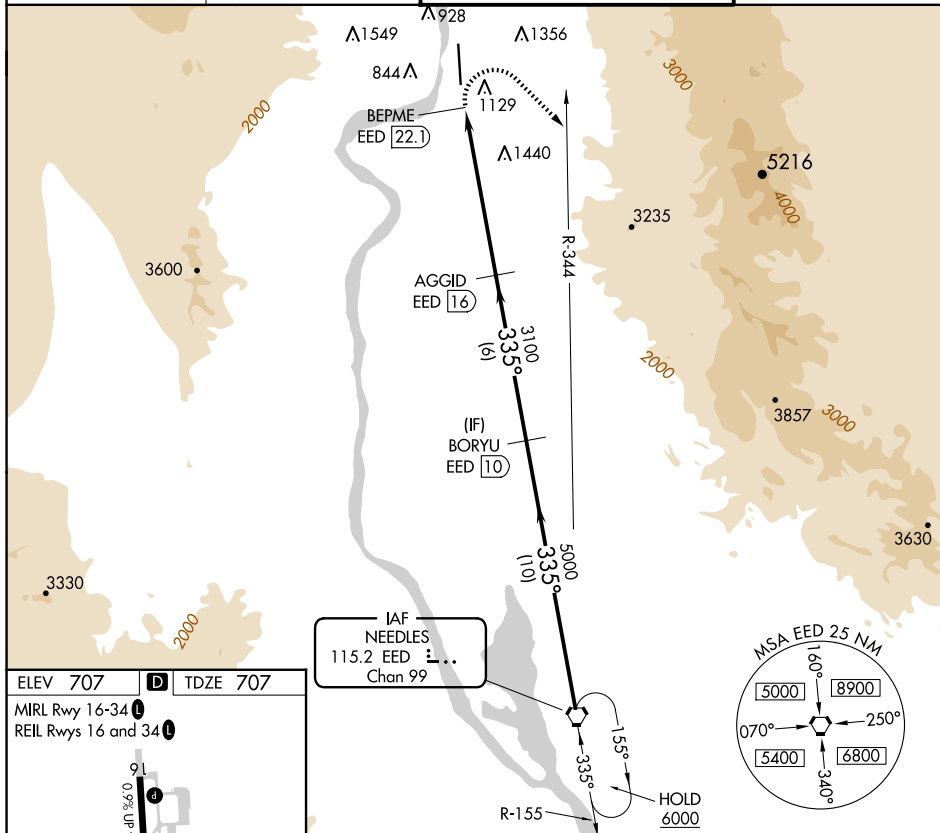
VORTAC EED <b>115.2</b> Chan <b>99</b>	APP CRS <b>335°</b>	Rwy Idg <b>8500</b> TDZE <b>707</b> Apt Elev <b>707</b>
--	------------------------	---

VOR RWY 34  
LAUGHLIN/BULLHEAD INTL (IFP)

**T** Rwy 34 helicopter visibility reduction below  $\frac{3}{4}$  SM NA.  
**A** DME required. Circling Rwy 16 NA at night.

**MISSED APPROACH:** Climbing right turn to 6000 on heading 120° and EED VORTAC R-344 to EED VORTAC and hold.



ATIS <b>119.825</b>	LOS ANGELES CENTER <b>134.65 360.65</b>	BULLHEAD TOWER★ <b>123.9</b> (CTAF) <b>0</b>	GND CON <b>118.25</b>
------------------------	--	---	--------------------------



ELEV	707	D	TDZE	707
------	-----	---	------	-----

MIRL Rwy 16-34 **L**  
 REIL Rwy 16 and 34 **L**

The diagram shows a vertical runway layout. At the top is a '9' with a 'L' to its right. Below it is a '4' with a 'D' to its right. A thick black line runs vertically between these points. To the left of this line, text reads '0.9% UP' with an arrow pointing up, and '8501 X 150'. Further down, text reads '1.0% DOWN' with an arrow pointing down. To the right of the runway, there is a 'TWR' (Tower) marked with a star symbol. At the bottom of the runway is a '34' with a 'P' to its left. An arrow points from the bottom towards the runway, labeled '335°'.

6000 hdg 120°	EED R-344	EED 	AGGID EED <u>16</u>		BORYU EED <u>10</u>	EED VORTAC
BEPME EED <u>22.1</u>		3.18° TCH 45		3100	5000	6000
0.9		6.1 NM		6 NM	10 NM	
CATEGORY	A		B		C	D
S-34	2840-1¼ 2133 (2200-1¼)		2840-1½ 2133 (2200-1½)		2840-3	2133 (2200-3)
 CIRCLING	2840-1¼ 2133 (2200-1¼)		2840-1½ 2133 (2200-1½)		2840-3	2133 (2200-3)