

WAAS CH <b>82602</b> <b>W34A</b>	APP CRS <b>344°</b>	Rwy Idg TDZE <b>707</b> Apt Elev <b>707</b>
--	------------------------	---

RNAV (GPS) RWY 34

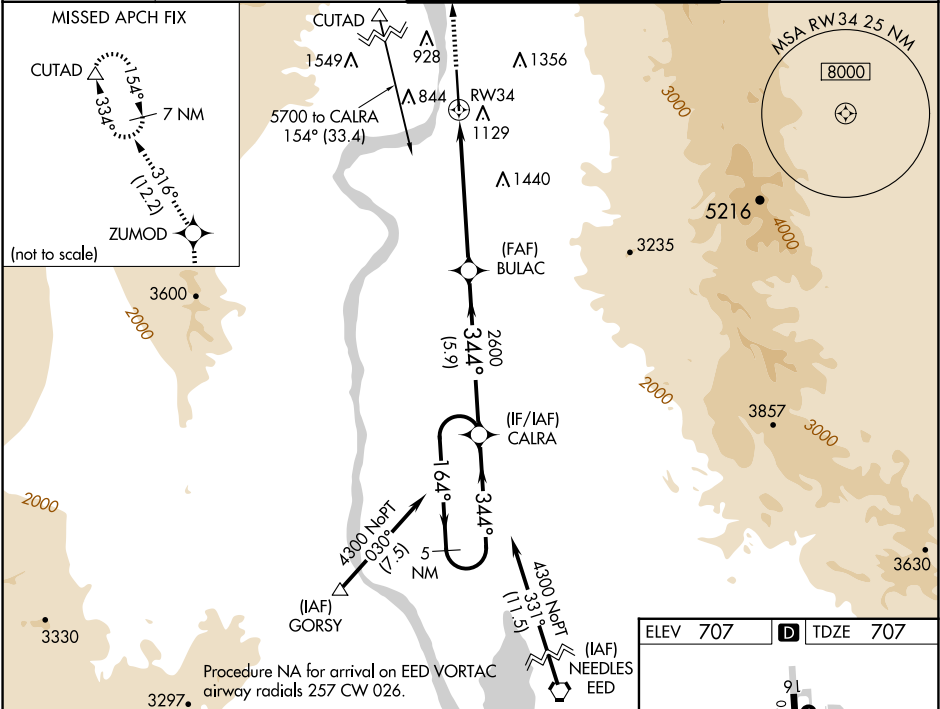
LAUGHLIN/BULLHEAD INTL (IFP)

⚠

For uncompensated Baro-VNAV systems, LNAV/VNAV NA below -16°C (4°F) or above 54°C (130°F).  
Rwy 34 helicopter visibility reduction below ¾ SM NA.  
DME/DME RNP-0.3 NA.  
Circling Rwy 16 NA at night.

MISSED APPROACH: Climb to 7600 direct ZUMOD and on track 316° to CUTAD and hold, continue climb-in-hold to 7600.

ATIS <b>119.825</b>	LOS ANGELES CENTER <b>134.65 360.65</b>	BULLHEAD TOWER★ <b>123.9 (CTAF) 0</b>	GND CON <b>118.25</b>
------------------------	--	--	--------------------------



7600	ZUMOD	CUTAD	VGSI and RNAV glidepath not coincident (VGSI Angle 3.00/TCH 45).	5 NM Holding Pattern
↑	✧	tr 316°	BULAC	CALRA
*LNAV only				
*3.1 NM to RW34				
RW34				
3.1 NM 2.7 NM 5.9 NM				
CATEGORY				
LPV DA	1352-2½ 645 (700-2½)			
LNAV/VNAV DA	1506-3 799 (800-3)			
LNAV MDA	1740-1¼ 1033 (1100-1¼)	1740-1½ 1033 (1100-1½)	1740-3 1033 (1100-3)	
CIRCLING	1740-1¼ 1033 (1100-1¼)	1740-1½ 1033 (1100-1½)	1800-3 1093 (1100-3)	2340-3 1633 (1700-3)

