

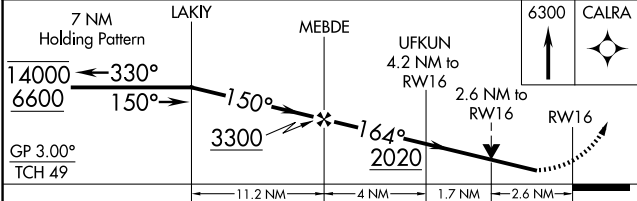
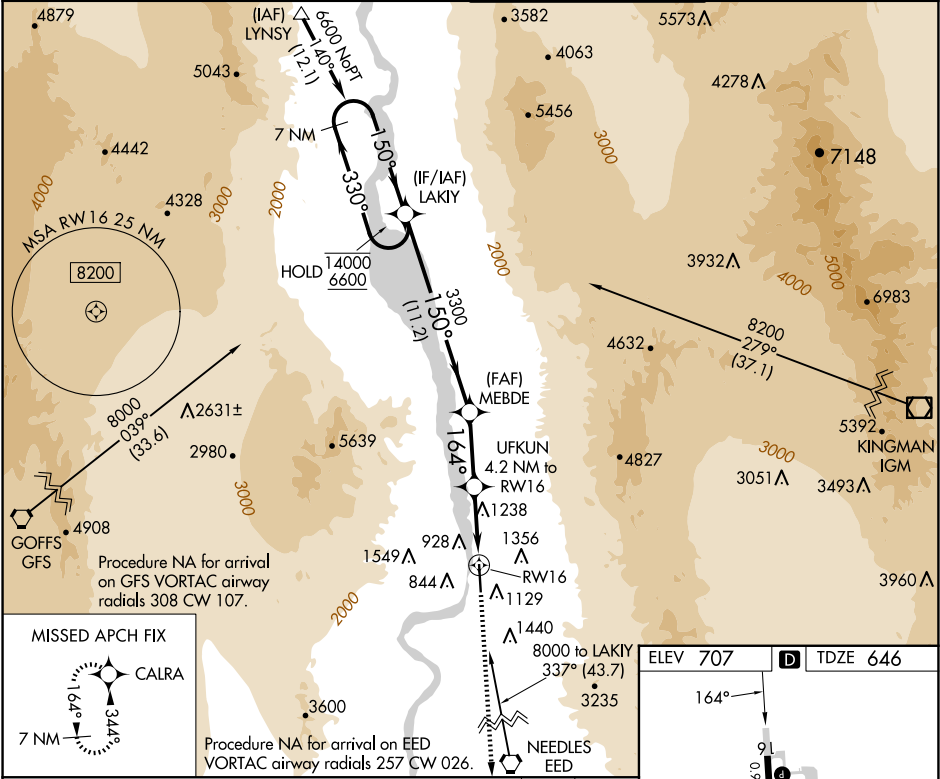
WAAS CH 82624 W16A	APP CRS 164°	Rwy Idg TDZE Apt Elev	8500 646 707
--	------------------------	-----------------------------	---

RNAV (GPS) RWY 16

LAUGHLIN/BULLHEAD INTL (IFP)

RNP APCH - GPS.	MISSED APPROACH: Climb to 6300 direct CALRA and hold, continue climb-in-hold to 6300.
<div><div>Procedure NA at night. Rwy 16 helicopter visibility reduction below ¾ SM NA. Baro-VNAV NA.</div></div>	

ATIS 119.825	LOS ANGELES CENTER 134.65 360.65	BULLHEAD TOWER★ 123.9 (CTAF) 0	GND CON 118.25
------------------------	--	---	--------------------------



CATEGORY	A	B	C	D
LPV DA		1048-1½	402 (400-1½)	
RNAV/VNAV DA		1500-2½	854 (800-2½)	
RNAV MDA	1500-1 854 (800-1)	1500-1¼ 854 (800-1¼)	1500-2½	854 (800-2½)
CIRCLING	1500-1 793 (800-1)	1560-1¼ 853 (900-1¼)	1800-3 1093 (1100-3)	2340-3 1633 (1700-3)

