

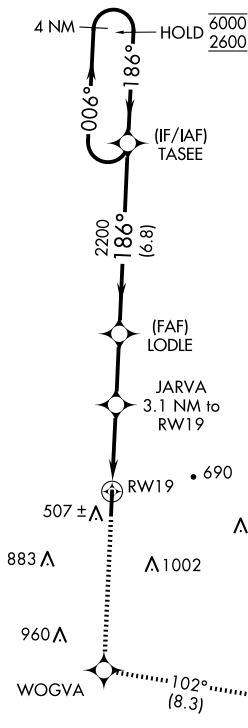
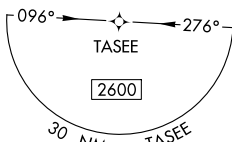
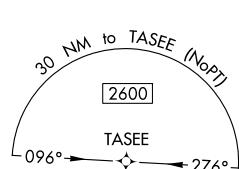
24025

RNAV (GPS) RWY 19
RICHARD ARTHUR FLD (M95)

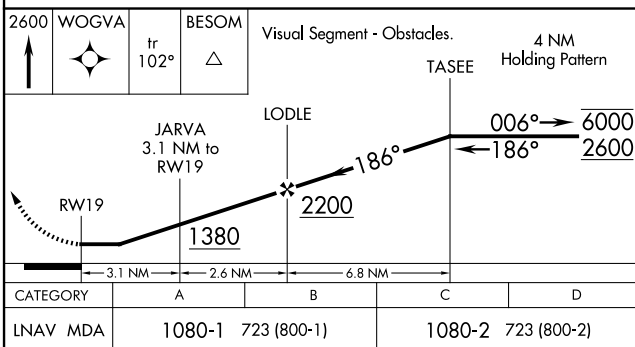
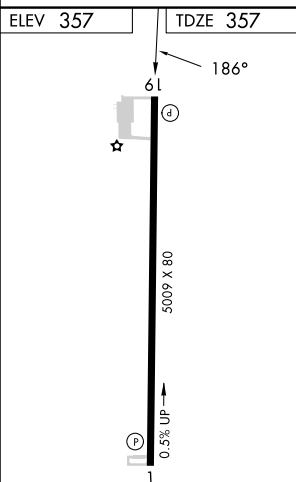
Procedure NA at night.
Rwy 19 helicopter visibility reduction below 1 SM NA.
Use Jasper altimeter setting.

MISSED APPROACH: Climb to 2600 direct WOGVA and on track 102° to BESOM and hold.

COLUMBUS APP CON ★
126.075 239.25

UNICOM
122.8 (CTAF) **L**

A1167



FAYETTE, ALABAMA
Amdt 1D 15AUG19

33°43'N-87°49'W

RICHARD ARTHUR FLD (M95)
RNAV (GPS) RWY 19

SE-4, 10 JUL 2025 to 07 AUG 2025