

WAAS CH 42534 W07A	APP CRS 066°	Rwy Idg TDZE 1072 Apt Elev 1072
--	------------------------	---

RNAV (GPS) RWY 7

BELLEFONTE (N96)

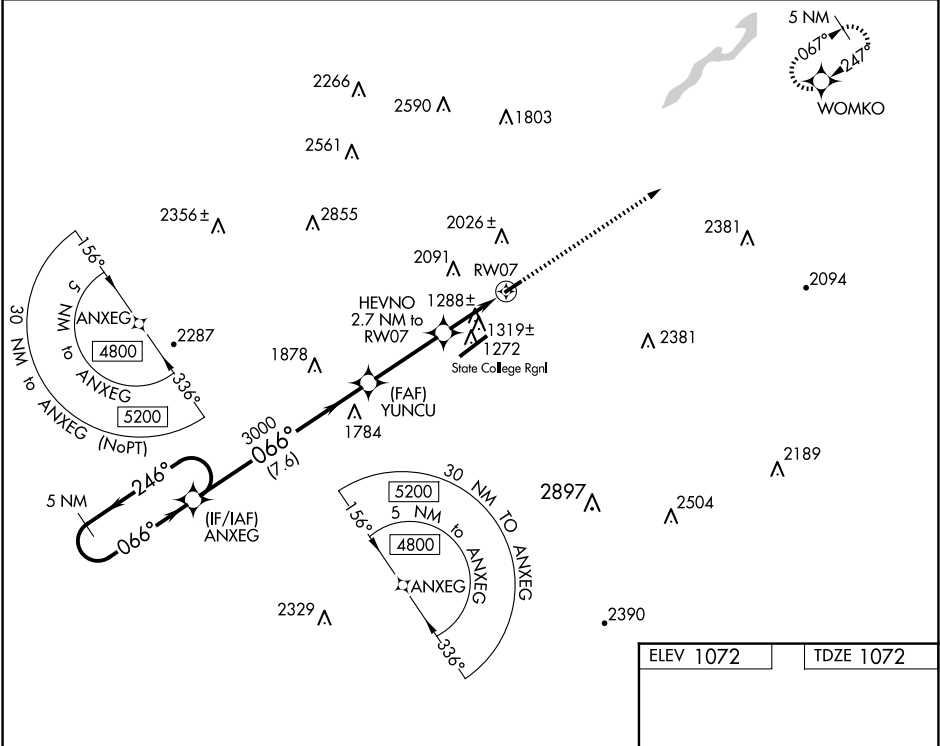
▼

NA

DME/DME RNP-0.3 NA. Use State College altimeter setting, when not received use Clearfield altimeter setting and increase all MDA 140 feet. Helicopter visibility reduction below 1 SM NA. Circling NA southeast of Rwy 7-25. Procedure NA at night.

MISSED APPROACH: Climb to 4600 direct WOMKO and hold, continue climb-in-hold to 4600.

UNV AWOS-3 127.65	NEW YORK CENTER 134.8 338.3	CLNC DEL 125.725	CLNC DEL 118.55 (When twr closed)	UNICOM 122.8 (CTAF)	122.7 0
-----------------------------	---------------------------------------	----------------------------	--	-------------------------------	----------------



ELEV 1072	TDZE 1072
-----------	-----------

5 NM Holding Pattern

Visual Segment - Obstacles

4600 WOMKO

ANXEG

YUNCU

HEVNO 2.7 NM to RW07

RW07

4800 ← 246° 066° →

3000

1960

7.6 NM 3.2 NM 2.7 NM

CATEGORY	A	B	C	D
LP MDA	1540-1	468 (500-1)	NA	
LNAV MDA	1580-1	508 (600-1)	NA	
CIRCLING	2140-1¼ 1068 (1100-1¼)	2380-1½ 1308 (1400-1½)	NA	

