

WAAS CH 57934 W25A	APP CRS 246°	Rwy Idg 3632 TDZE 1072 Apt Elev 1072
--	------------------------	---

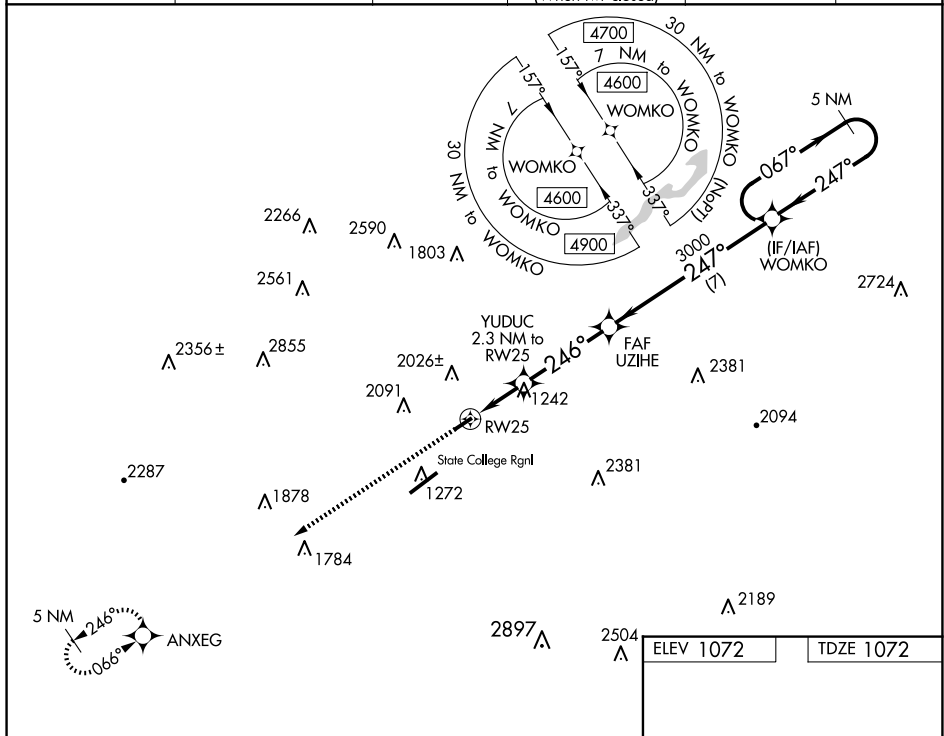
RNAV (GPS) RWY 25

RNP APCH - GPS.

NA Baro-VNAV NA. VDP NA with Clearfield altimeter setting. Use State College altimeter setting, when not received use Clearfield altimeter setting and increase all DA 129 feet and all MDA 140 feet. Increase LPV and LNAV/VNAV all Cats visibility ½ mile. Circling NA southeast of Rwy 7-25. Procedure NA at night.

MISSED APPROACH: Climb to 4800 direct ANXEG and hold, continue climb-in-hold 4800.

UNV AWOS-3 127.65	NEW YORK CENTER 134.8 338.3	CLNC DEL 125.725	CLNC DEL 118.55 (When twr closed)	UNICOM 122.8 (CTAF)	122.7
-----------------------------	---------------------------------------	----------------------------	--	-------------------------------	--------------



4800 ANXEG VGS and RNAV glidepath not coincident (VGS Angle 3.50/TCH 40). 5 NM Holding Pattern

*LNAV only.

RW25

0.9 NM to RW25

YUDUC 2.3 NM to RW25

UZIHE 3000

WOMKO

067° → 4600

← 247°

246°

*1820

3000

GP 3.00° TCH 40

CATEGORY	A	B	C	D
LPV DA	1367-1	295 (300-1)		NA
LNAV/VNAV DA	1701-2¼	629 (700-2¼)		NA
LNAV MDA	1600-1	528 (500-1)		NA
CIRCLING	2140-1¼ 1068 (1100-1¼)	2380-1½ 1308 (1400-1½)		NA

A diagram of a runway labeled "LIRL Rwy 7-25". The runway is represented by a thick black line sloping upwards from left to right. Above the line, the text "3632 X.60" is written. Below the line, the text "0.3% UP" is written with an arrow pointing to the slope. At the top right end of the runway, there is a heading indicator showing "246°" and a small circular icon with a star. The runway is flanked by dashed lines representing the edges.