

WAAS
CH **86238**
W05A

APP CRS
049°

Rwy ldg
TDZE
Apt Elev
5001
85
90

RNAV (GPS) RWY 5
ZEPHYRHILLS MUNI (ZPH)


RNP APCH.

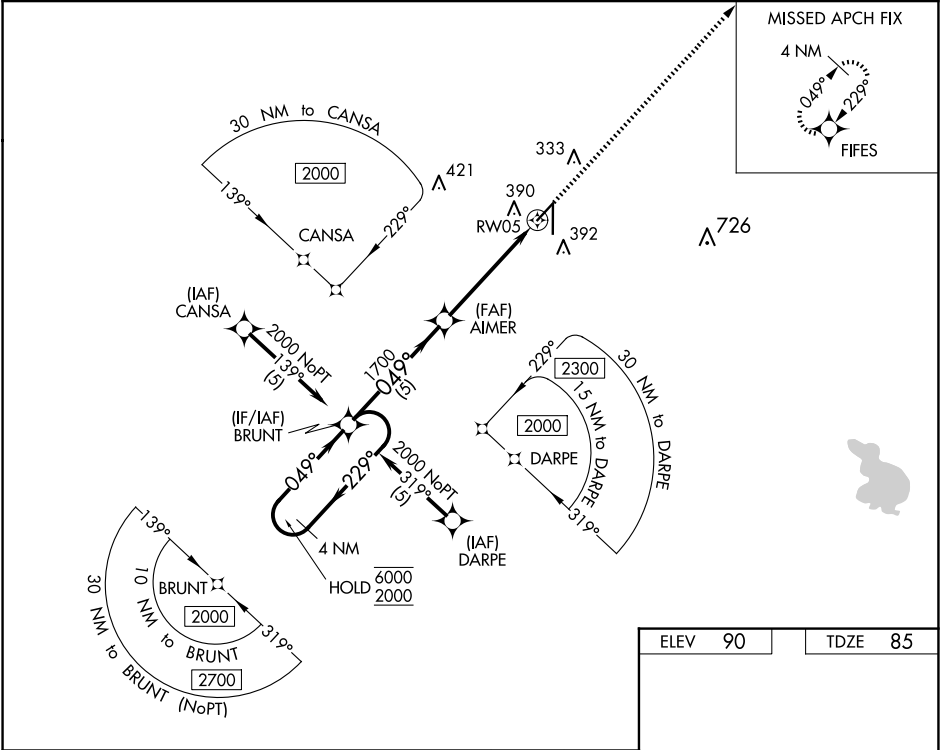
Rwy 5 helicopter visibility reduction below $\frac{3}{4}$ SM NA.
For uncompensated Baro-VNAV systems, LNAV/VNAV NA below -15°C or above 54°C.

MISSED APPROACH: Climb to 2000 direct FIFES and hold.

AWOS-3PT
118.975

TAMPA APP CON
119.9 290.3

UNICOM
123.075 (CTAF) 



4 NM Holding Pattern


VGSI and RNAV glidepath not coincident (VGSI Angle 3.63/TCH 41).



2000 FIFES

GP 3.00° TCH 55

5 NM 3.7 NM 1.2 NM

CATEGORY

	A	B	C	D
LPV DA	373-1	288 (300-1)	NA	
LNAV/VNAV DA	582-1 $\frac{1}{8}$	497 (500-1 $\frac{1}{8}$)	NA	
LNAV MDA	600-1	515 (600-1)	NA	
 CIRCLING	740-1	650 (700-1)	NA	

MRL Rwy 5-23 
HIRL Rwy 1-19 
REIL Rwy 1 and 19 