

WAAS CH <b>45538</b> <b>W23A</b>	APP CRS <b>229°</b>	Rwy Idg <b>5001</b> TDZE <b>88</b> Apt Elev <b>90</b>
--	------------------------	---

RNAV (GPS) RWY 23  
ZEPHYRHILLS MUNI (ZPH)

RNP APCH.

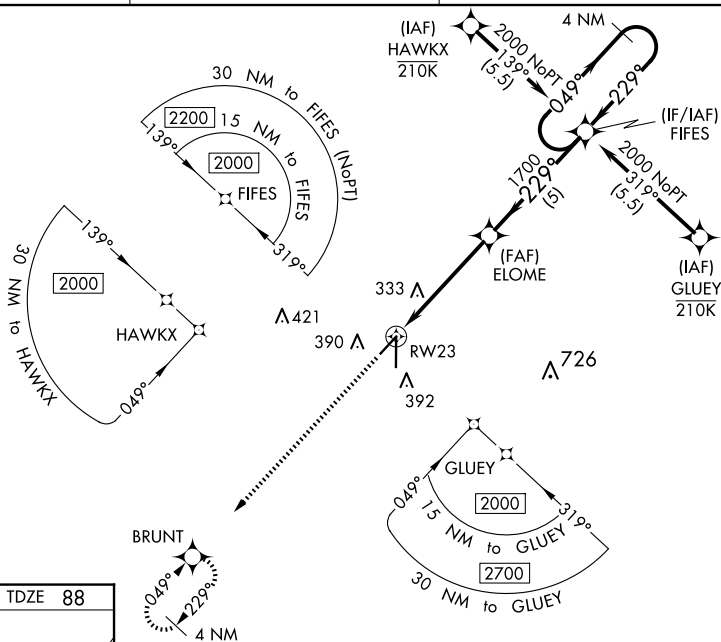
**T** Baro-VNAV and VDP NA when using Tampa Exec altimeter setting. For uncompensated  
**A** Baro-VNAV systems, LNAV/VNAV NA below -15°C or above 54°C. Rwy 23 helicopter  
visibility reduction below ¾ SM NA. When local altimeter setting not received, use Tampa  
Exec altimeter setting and increase all DA 48 feet and all MDA 60 feet. Increase LPV and  
LNAV/VNAV all Cats, LNAV and Circling Cat C/D visibility ¼ mile.

**MISSED APPROACH:**  
Climb to 2000 direct  
BRUNT and hold.

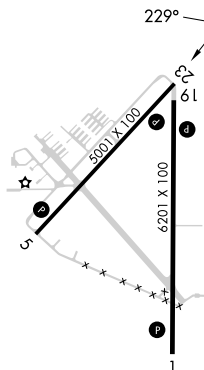
AWOS-3PT  
118.975

TAMPA APP CON  
119.9 290.3

UNICOM  
123.075 (CTAF) 



ELEV	90		TDZE	88
------	----	--	------	----



MIRL Rwy 5-23 **L**  
HIRL Rwy 1-19 **L**  
REIL Rws 1 and 19 **L**

2000  
↑  
BRUNT

\* RNAV only

VGSI and RNAV glidepath not coincident  
(VGSI Angle 3.61/TCH 41).

4 NM  
Holding Pattern

FIFES

049° → 2000  
← 229°

GP 3.00°  
TCH 53

ELOME  
1700

229°

1700

\* 1.5 NM to RW23

RW23

		1.5 NM		3.4 NM		5 NM			
CATEGORY		A		B		C		D	
LPV	DA			377-1		289 (300-1)			
RNAV/ VNAV	DA			409-1		321 (400-1)			
RNAV	MDA	600-1		512 (600-1)		600-1 <sup>3</sup> / <sub>8</sub>		512 (600-1 <sup>3</sup> / <sub>8</sub> )	
<b>C</b> CIRCLING		740-1		650 (700-1)		740-1 <sup>3</sup> / <sub>4</sub> 650 (700-1 <sup>3</sup> / <sub>4</sub> )		740-2 650 (700-2)	