

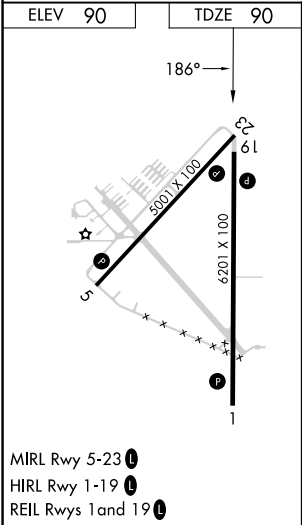
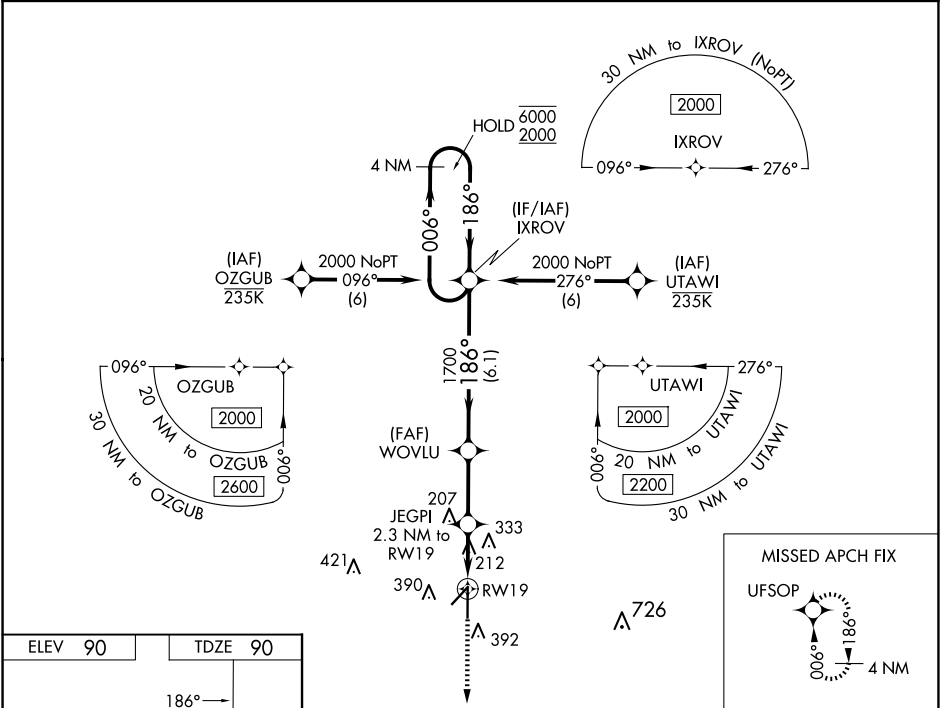
WAAS CH 78436 W19A	APP CRS 186°	Rwy Idg TDZE 90 Apt Elev 90	6201
--	------------------------	---	-------------

RNAV (GPS) RWY 19

ZEPHYRHILLS MUNI (ZPH)

RNP APCH. ▼ For uncompensated Baro-VNAV systems, LNAV/VNAV NA below -15°C or above 54°C. ▲	MISSED APPROACH: Climb to 2000 direct UFSOP and hold.
--	---

AWOS-3PT 118.975	TAMPA APP CON 119.9 290.3	UNICOM 123.075 (CTAF) 0
----------------------------	-------------------------------------	-----------------------------------



MIRL Rwy 5-23
HIRL Rwy 1-19
REIL Rwy 1 and 19

2000	UFSOP	VGSI and RNAV glidepath not coincident (VGSI Angle 3.00/TCH 43).	IXROV	4 NM Holding Pattern
*LNAV only.	JEGPI 2.3 NM to RWY 19	WOVLU 1700	186°	186°
*1.1 NM to RWY 19	1.1 NM	1.2 NM	2.6 NM	6.1 NM
1	A	B	C	D
LPV DA	340-7/8	250 (300-7/8)		
LNAV/VNAV DA	380-1	290 (300-1)		
LNAV MDA	480-1	390 (400-1)	480-1 1/8	390 (400-1 1/8)
CIRCLING	740-1	650 (700-1)	740-1 3/4	650 (700-1 3/4)
			740-2	650 (700-2)