

WAAS

CH 99740

W19A

APP CRS

187°

Rwy Idg

6201

TDZE

1303

Apt Elev

1303

RNAV (GPS) RWY 19

WILKES COUNTY (UKF')

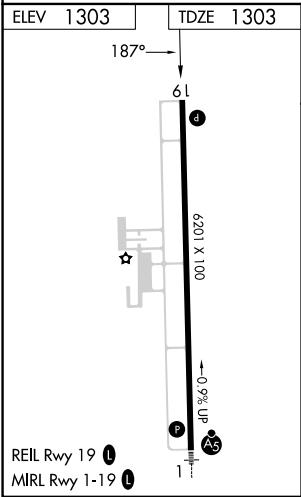
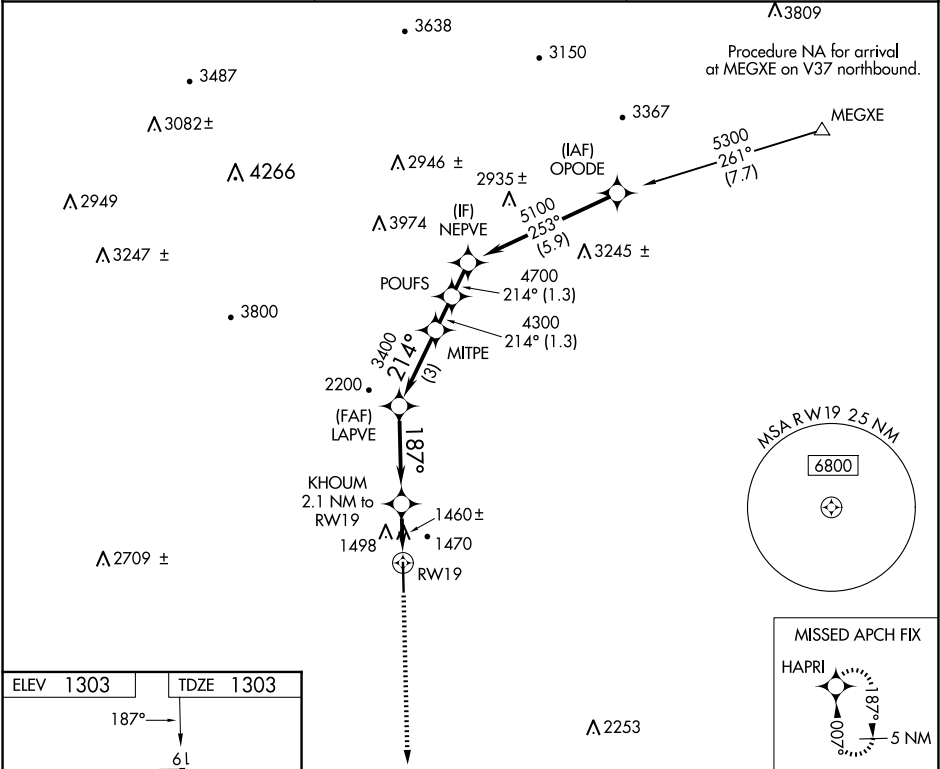
▼

⚠

DME/DME RNP-0.3 NA. VDP NA when using Hickory altimeter setting. When local altimeter setting not received, use Hickory altimeter setting and increase all MDAs 100 feet and LP and LNAV visibility Cats C/D ¼ SM and increase Circling visibility Cat C ½ SM. Rwy 19 helicopter visibility reduction below ¾ SM NA.

MISSED APPROACH: Climb to 5000 direct HAPRI and hold, continue climb-in-hold to 5000.

AWOS-3 126.625	ATLANTA CENTER 125.15 263.0	UNICOM 122.7 (CTAF) 0
-------------------	--------------------------------	--------------------------



5000	HAPRI	VGSI and descent angles not coincident (VGSI Angle 3.00/TCH 47).				NEPVE
		KHOUM	LAPVE	MITPE	POUFS	
		2.1 NM to RW19	≤ 3.45° TCH 47			
		1.2 NM to RW19				
		RW19				
		2100	187°	3400	4300	4700
		1.2	0.9	3.5 NM	3 NM	1.3 NM
						1.3 NM
CATEGORY		A	B	C	D	
LP MDA		1720-1	417 (500-1)	1720-1½	417 (500-1½)	
LNAV MDA		1760-1	457 (500-1)	1760-1¾	457 (500-1¾)	
CIRCLING		1800-1	1880-1	1880-1½	2240-3	
		497 (500-1)	577 (600-1)	577 (600-1½)	937 (1000-3)	