

WAAS CH 40440 W01A	APP CRS 007°	Rwy Idg 6201 TDZE 1276 Apt Elev 1303
--	------------------------	---

RNAV (GPS) RWY 1

WILKES COUNTY (UKF)

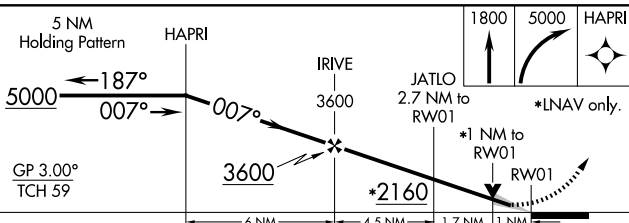
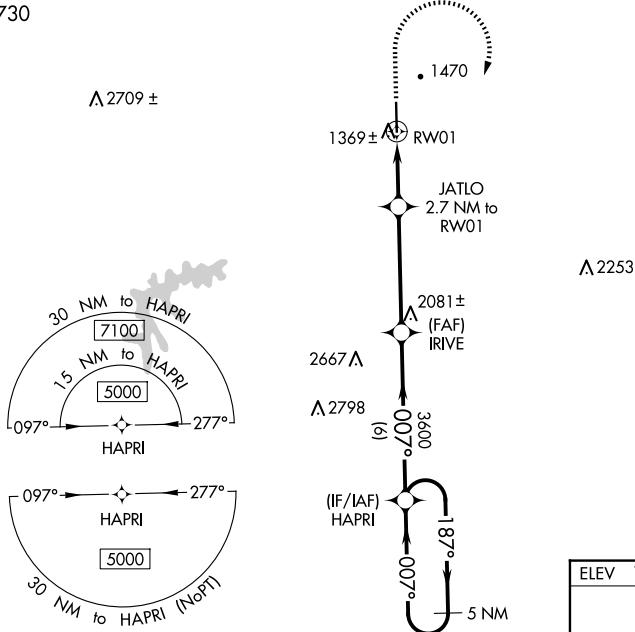
▼ For uncompensated Baro-VNAV systems, LNAV/VNAV when below -17°C (2°F) or above 54°C (130°F). DME/DME RNP-0.3 NA. When local altimeter setting not received, use Hicory altimeter setting and increase LPV DA to 1566 feet and LNAV/VNAV DA to 1669 feet and LNAV/VNAV visibility all Cats ½ SM. Increase all MDAs 100 feet and LNAV visibility Cats C/D ¼ SM and Circling Cat C ½ SM. For inop ALS when using Hicory altimeter setting, increase LPV all Cats visibility to 1 SM. VDP and Baro-VNAV NA when using Hicory altimeter setting.


MALSR



MISSED APPROACH: Climb to 1800 then climbing right turn to 5000 direct HAPRI and hold, continue climb-in-hold to 5000.

AWOS-3 126.625	ATLANTA CENTER 125.15 263.0	UNICOM 122.7 (CTAF) 0
--------------------------	---------------------------------------	--



CATEGORY		A	B	C	D
LPV	DA	1476-½		200 (200-½)	
RNAV/ VNAV	DA	1579-⅝		303 (300-⅝)	
RNAV	MDA	1620-½ 344 (400-½)		1620-⅝ 344 (400-⅝)	
 CIRCLING		1800-1 497 (500-1)	1880-1 577 (600-1)	1880-1½ 577 (600-1½)	2240-3 937 (1000-3)

