

LOC/DME I-UKF <u>111.55</u> Chan 52 (Y)	APP CRS 007°	Rwy Idg 6201 TDZE 1276 Apt Elev 1303
---	------------------------	---

ILS Z or LOC Z RWY 1
WILKES COUNTY (UKF)

DME required. RNAV 1-GPS required.

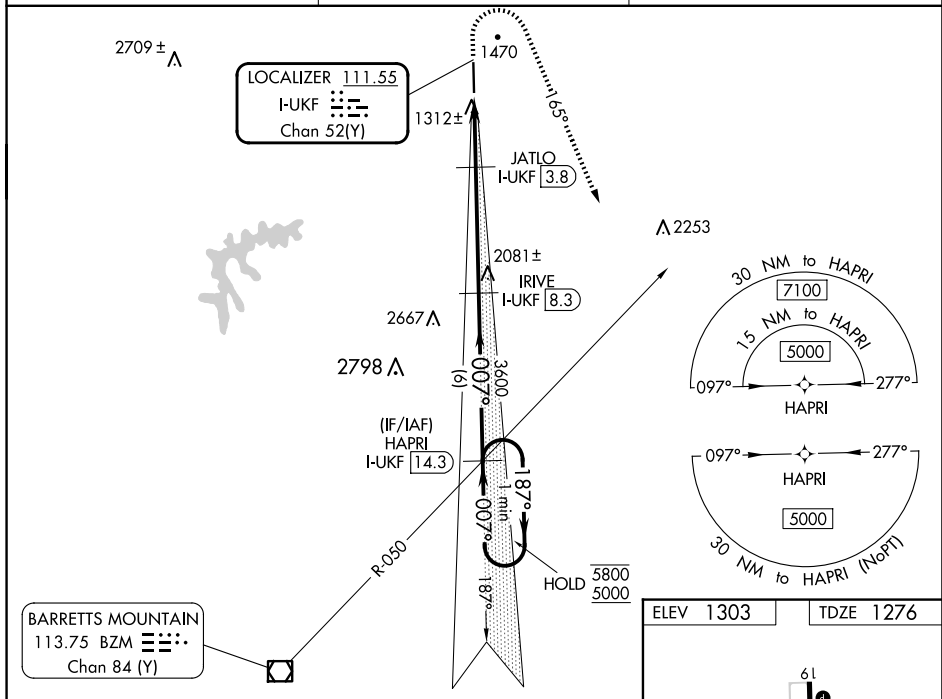
T VDP NA when using Hickory altimeter setting. When local altimeter setting not received, use Hickory altimeter setting and increase S-ILS DA to 1569 feet
A and all MDAs 100 feet, and increase S-LOC Cats C/D visibility $\frac{3}{8}$ SM and Circling Cat C visibility $\frac{1}{2}$ SM. For inop ALS when using Hickory altimeter setting, increase S-ILS all Cats visibility and S-LOC Cat C/D visibility $\frac{3}{8}$ SM.

MALSR



MISSED APPROACH: Climb to 1740 then climbing right turn to 5000 heading 165° and BZM VOR/DME R-050 direct HAPRI/I-UKF 14.3 DME and hold, continue climb-in-hold to 5000.

AWOS-3 126.625	ATLANTA CENTER 125.15 263.0	UNICOM 122.7 (CTAF) 0
--------------------------	---------------------------------------	---------------------------------



HAPRI I-UKF 14.3

One Minute Holding Pattern

5800 ← 187°
5000 → 007°

GS 3.00°
TCH 59'

IRIVE I-UKF 8.3

JATLO I-UKF 3.8

*I-UKF 2.1

I-UKF 1.1

BZM R-050

HAPRI I-UKF 14.3

*LOC only.

6 NM | 4.5 NM | 1.7 NM | 1 NM

CATEGORY	A	B	C	D
S-ILS 1		1476-½	200 (200-½)	
S-LOC 1	1640-½	364 (400-½)	1640-⅝	364 (400-⅝)
C CIRCLING	1800-1 497 (500-1)	1880-1 577 (600-1)	1880-1½ 577 (600-1½)	2240-3 937 (1000-3)

