

WAAS  
CH **40436**  
**W35A**

APP CRS  
**354°**

Rwy Idg  
TDZE **1435**  
Apt Elev **1437**

**RNAV (GPS) RWY 35**

WASHINGTON COUNTY VETERAN'S MEML (K38)

RNP APCH - GPS.

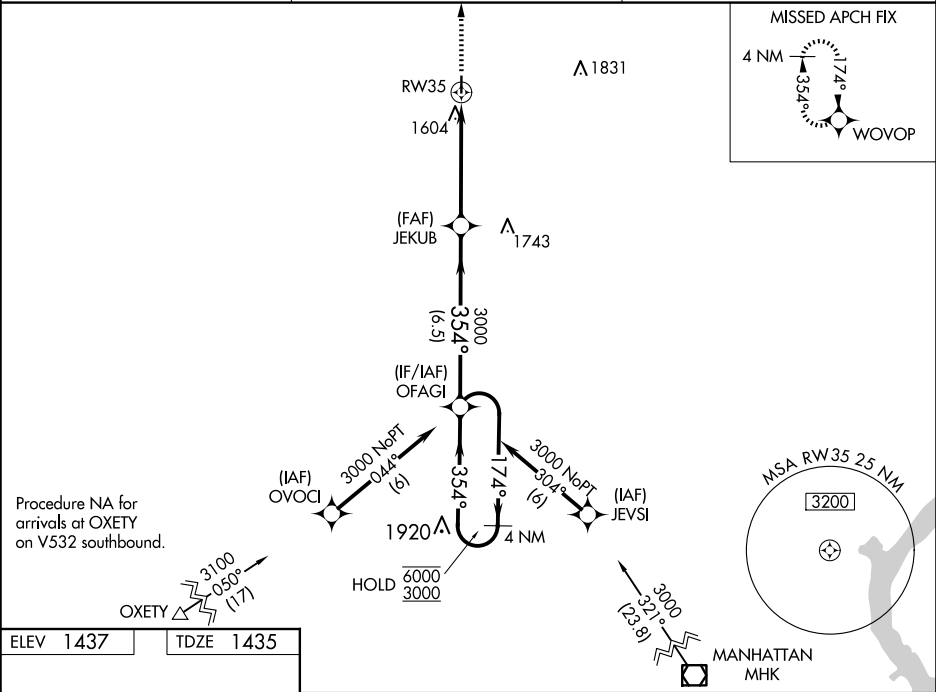
▼

NA

Circling Rwy 17 NA at night.  
Rwy 35 helicopter visibility reduction below ¾ SM NA.  
Baro-VNAV NA. Use Concordia altimeter setting.

MISSED APPROACH: Climb to 3100 direct WOVOP and hold.

CNK ASOS <b>123.825</b>	KANSAS CITY CENTER <b>127.35 257.975</b>	CTAF <b>122.90</b>
----------------------------	---	-----------------------



ELEV <b>1437</b>	TDZE <b>1435</b>
------------------	------------------

4 NM

Holding Pattern

OFAGI

JEKUB

6000  
3000

←174°  
354°→

354°

3000

GP 3.00°

TCH 40

6.5 NM

4.8 NM

3100

WVOVOP

RW35

CATEGORY	A	B	C	D
LPV DA	1762-1	327 (400-1)		NA
LNAV/VNAV DA	1827-1½	392 (400-1½)		NA
LNAV MDA	2020-1	585 (600-1)	2020-1¾ 585 (600-1¾)	NA
CIRCLING	2020-1	583 (600-1)	2020-1¾ 583 (600-1¾)	NA

35

0.3% UP

3400 X 60

354°

MIRL Rwy 17-35

WASHINGTON, KANSAS

Amdt 1B 06OCT22

WASHINGTON COUNTY VETERAN'S MEML (K38)

39°44'N-97°03'W

**RNAV (GPS) RWY 35**