

WAAS CH <b>82636</b> <b>W17A</b>	APP CRS <b>174°</b>	Rwy Idg <b>3186</b> TDZE <b>1436</b> Apt Elev <b>1437</b>
--	------------------------	---

## RNAV (GPS) RWY 17

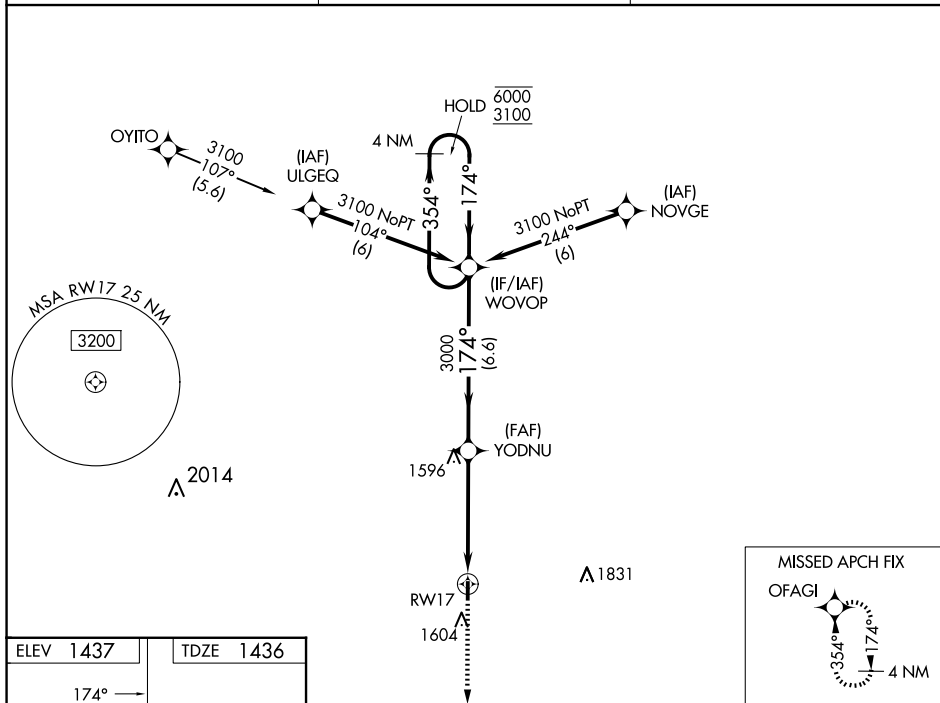
WASHINGTON COUNTY VETERAN'S MEML (K38)

RNP APCH - GPS.

**T** Rwy 17 helicopter visibility reduction below 1 SM NA.  
**A** NA Baro-VNAV NA. Use Concordia altimeter setting.  
Straight-in and Circling Rwy 17 NA at night.

**MISSED APPROACH:** Climb to 3000 direct OFAGI and hold.

<p>CNK ASOS</p> <p><b>123.825</b></p>	<p>KANSAS CITY CENTER</p> <p><b>127.35 257.975</b></p>	<p>CTAF</p> <p><b>122.90</b></p>
---------------------------------------	--	----------------------------------



ELEV	1437		TDZE	1436
------	------	--	------	------



MIRL Rwy 17-35 (L)

RNAV (GPS) RWY 17