

WAAS CH 70436 W03A	APP CRS 038°	Rwy Idg TDZE 3976 Apt Elev 3979
--	------------------------	---

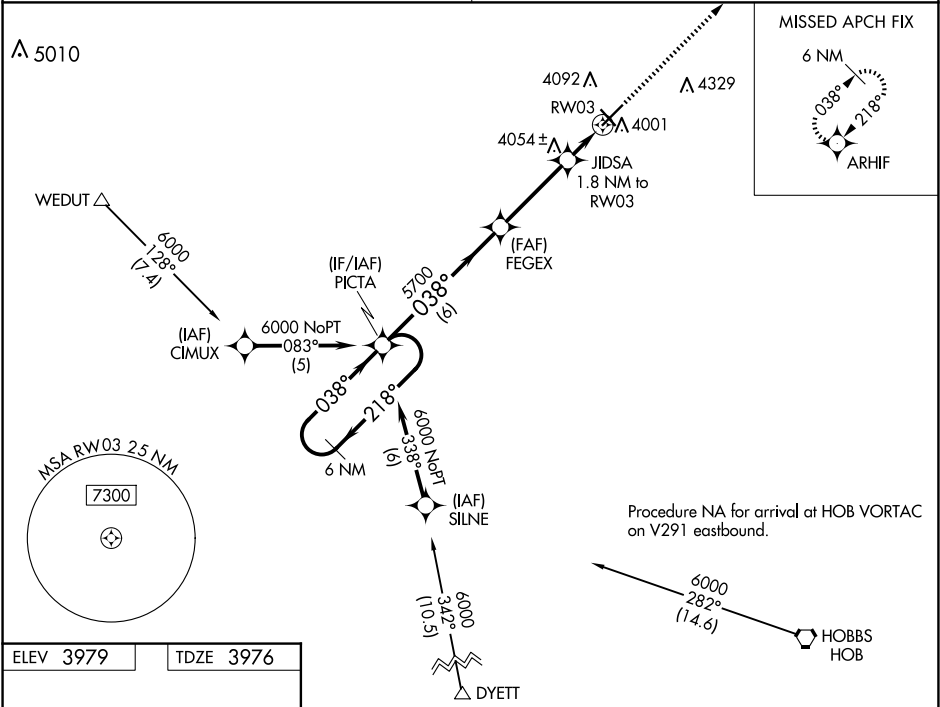
RNAV (GPS) RWY 3

LEA COUNTY/ZIP FRANKLIN MEML (E06)

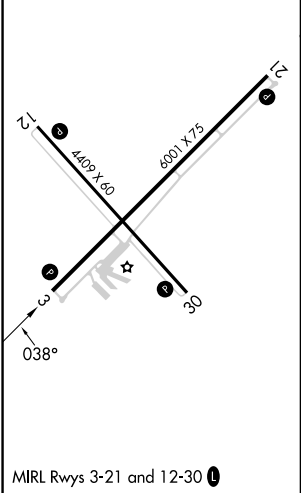
Baro-VNAV NA. DME/DME RNP-0.3 NA. Use Hobbs altimeter setting; when not received, procedure NA. Helicopter visibility reduction below 1 SM NA. Night landing: Rwy 3, 12, 30 NA.

MISSED APPROACH: Climb to 6000 direct ARHIF and hold.

FORT WORTH CENTER 133.1 298.95	UNICOM 122.8 (CTAF) 0
--	---------------------------------



ELEV 3979	TDZE 3976
-----------	-----------



VGSI and RNAV glidepath not coincident (VGSI Angle 3.00/TCH 43).				6000	ARHIF
6 NM Holding Pattern				↑	✧
GP 3.00° TCH 51				*LNAV only	
<div><div>6000</div><div>218°</div><div>038°</div><div>038°</div><div>5700</div><div>5700</div><div>4600</div><div>6 NM</div><div>3.5 NM</div><div>1.8 NM</div><div>JIDSA 1.8 NM to RW03</div><div>RW03</div></div>					
CATEGORY	A	B	C	D	
LPV DA	4314-1½ 338 (400-1½)			NA	
LNAV/VNAV DA	4314-1½ 338 (400-1½)			NA	
LNAV MDA	4400-1	424 (500-1)	4400-1¼ 424 (500-1¼)	NA	
CIRCLING	4480-1	501 (600-1)	4720-2¼ 741 (800-2¼)	NA	