

VOR/DME FAR	APP CRS	Rwy Idg	3901
116.2	283°	TDZE	933
Chan 109		Apt Elev	933

VOR/DME RWY 31

CASSELTON ROBERT MILLER RGNL (5N8)

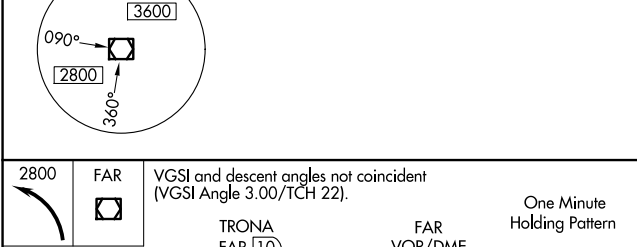
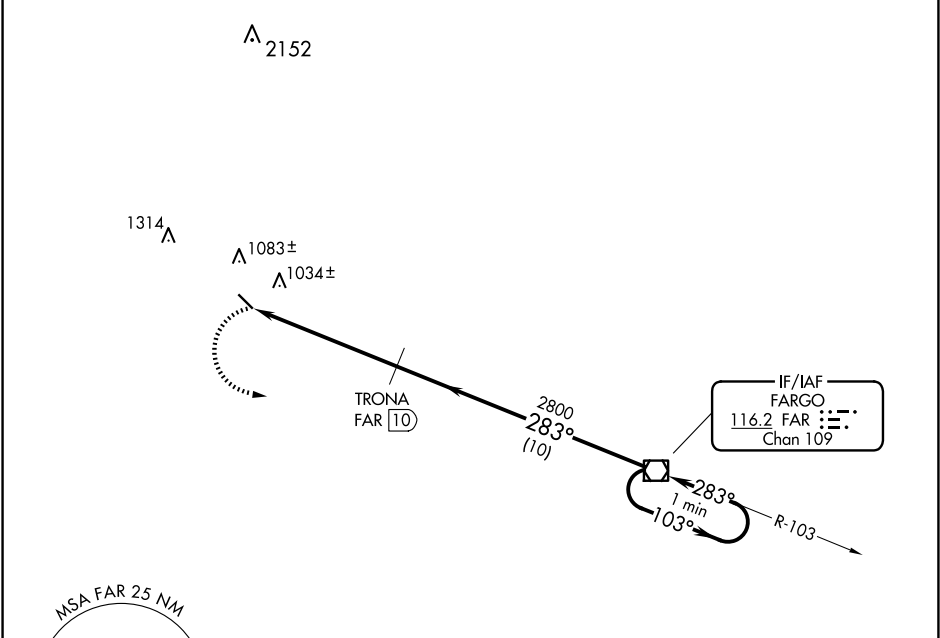
▼

▲ NA

Use Fargo altimeter setting; when not received, use Moorhead altimeter setting and increase all MDA 20 feet.

MISSED APPROACH: Climbing left turn to 2800 direct FAR VOR/DME and hold.

FAR ASOS	FARGO APP CON	UNICOM
124.5 379.2	120.4 377.15	122.8 (CTAF) 0



	FAR 15.6	2800	283°	103°	2800
	5.6 NM	10 NM			
CATEGORY	A	B	C	D	
S-31	1360-1	427 (500-1)	1360-1¼ 427 (500-1¼)	NA	
CIRCLING	1480-1 547 (600-1)	1520-1 587 (600-1)	1620-2 687 (700-2)	NA	

