

WAAS  
CH **53607**  
**W31A**

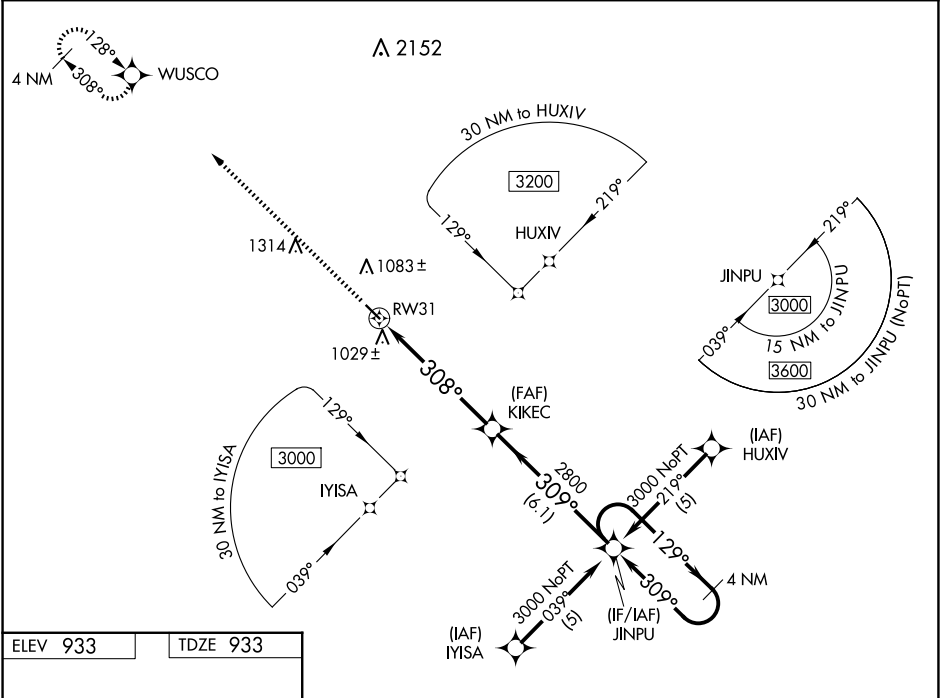
APP CRS  
**308°**

Rwy Idg **3901**  
TDZE **933**  
Apt Elev **933**

**RNAV (GPS) RWY 31**

CASSELTON ROBERT MILLER RGNL (5N8)

RNP APCH. ▼ Use Fargo altimeter setting; when not received, use Moorhead altimeter setting and increase all MDA 20 feet. Baro-VNAV NA. ▲ NA		MISSED APPROACH: Climb to 3000 direct WUSCO and hold.
FAR ASOS <b>124.5 379.2</b>	FARGO APP CON <b>120.4 377.15</b>	UNICOM <b>122.8 (CTAF) 1</b>



ELEV 933

TDZE 933

REIL Rwy 31 1

MIRL Rwy 13-31 1

3000 WUSCO

VGSI and descent angles not coincident (VGSI Angle 3.00/TCH 22).

4 NM Holding Pattern

JINPU

KIKEC

RW31

308° to RW31

308° X 75

308°

309°

129°

3000

2800

5.7 NM

6.1 NM

GP 3.00° TCH 40

CATEGORY	A	B	C	D
LPV DA	1226-1	293 (300-1)		NA
LNAV/VNAV DA	1370-1½	437 (500-1½)		NA
LNAV MDA	1420-1	487 (500-1)	1420-1¼ 487 (500-1¼)	NA
CIRCLING	1480-1 547 (600-1)	1520-1 587 (600-1)	1620-2 687 (700-2)	NA