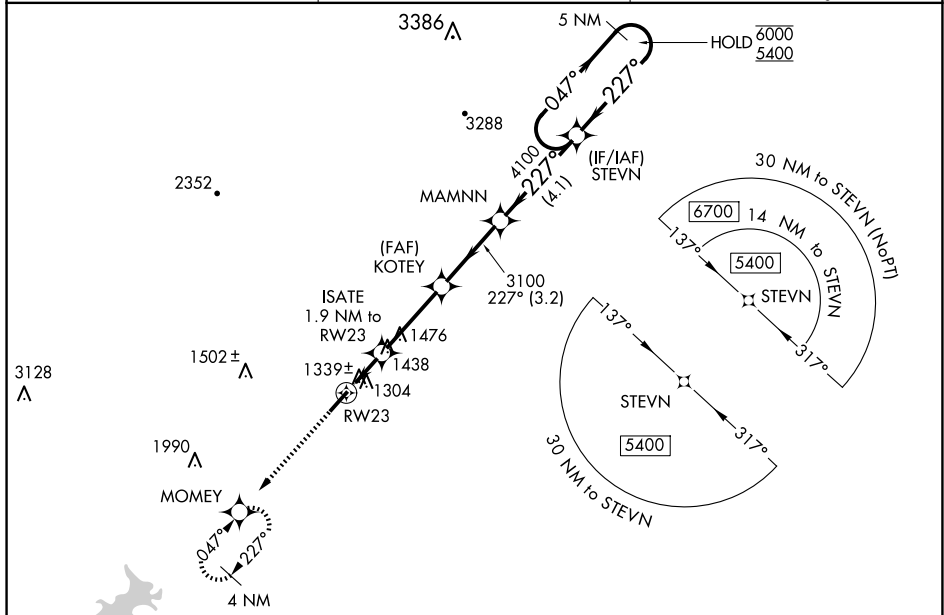


24249

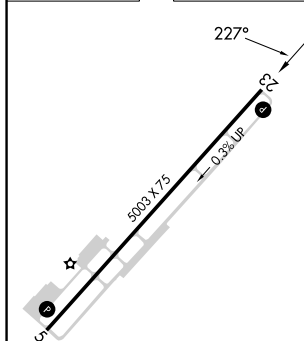
RNAV (GPS) RWY 23
CHEROKEE COUNTY RGNL (CNI)

<p>T Rwy 23 helicopter visibility reduction below 1 SM NA. Straight-in Rwy 23 NA at night, Circling Rwy 23 NA at night.</p>	<p>MISSED APPROACH: Climb to 4000 direct MONEY and hold, continue climb-in-hold to 4000.</p>
	<p>REMARKS:</p>

AWOS-3PT 119.825	ATLANTA APP CON 121.0 268.7	UNICOM 123.0 (CTAF) 0
----------------------------	---------------------------------------	---------------------------------



ELEV 1219	TDZE 1218
-----------	-----------



4000
↑
MOMMY

VGS and RNAV glidepath not coincident
(VGS Angle 3.00/TCH 33).

5 NM
Holding Pattern

MAMNN STEVN

ISATE
1.9 NM to RW23

KOTEY

3.47°
TCH 30

227°

047° → 6000
← 227° 5400

RW23

1920 3100 4100

1.9 NM 3.2 NM 3.2 NM 4.1 NM

CATEGORY	A	B	C	D
LP MDA	1600-1	382 (400-1)	1600-1 $\frac{1}{8}$ 382 (400-1 $\frac{1}{8}$)	NA
RNAV MDA	1740-1	522 (600-1)	1740-1 $\frac{5}{8}$ 522 (600-1 $\frac{5}{8}$)	NA
C CIRCLING	1740-1	521 (600-1)	1820-1 $\frac{3}{4}$ 601 (700-1 $\frac{3}{4}$)	NA

REIL Rwy 5 and 23 **L**
MIRL Rwy 5-23 **L**

CANTON, GEORGIA
Amdt 1C 05SEP24

34°19'N-84°25'W

CHEROKEE COUNTY RGNL (CNI)
RNAV (GPS) RWY 23

SE-4, 10 JUL 2025 to 07 AUG 2025