
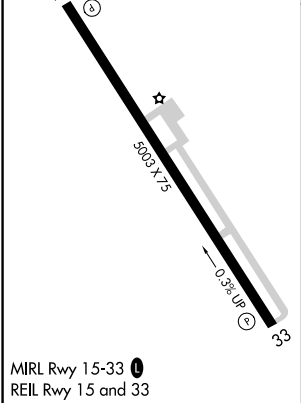
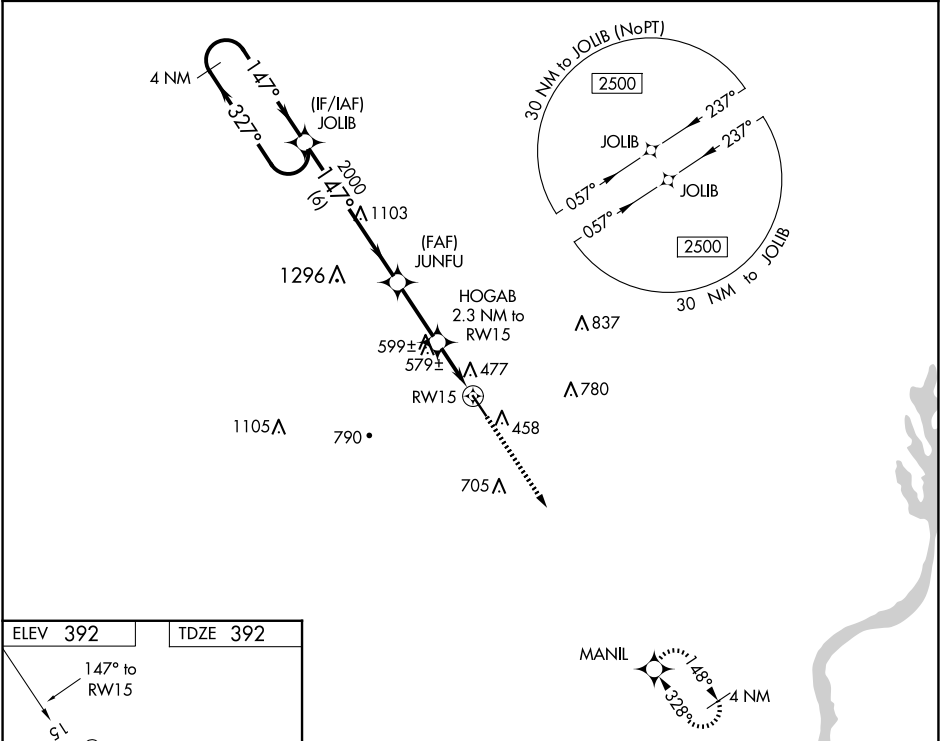


WAAS CH 49234 W15A	APP CRS 147°	Rwy Idg TDZE 392 Apt Elev 392	5003
--	------------------------	---	-------------

RNAV (GPS) RWY 15

BOONEVILLE/BALDWIN (8M1)

RNP APCH.		MISSED APPROACH: Climb to 2500 direct MANIL and hold.
	Baro-VNAV NA. Use Corinth altimeter setting, when not received use Tupelo altimeter setting and increase all DA 4 feet, and all MDA 20 feet. Rwy 15 helicopter visibility reduction below 3/4 SM NA.	
CRX AWOS-3PT 118.675	MEMPHIS CENTER 135.9 273.55	UNICOM 122.8 (CTAF) 0



4 NM Holding Pattern		JOLIB		VGSI and RNAV glidepath not coincident (VGSI Angle 3.00/TCH 40).		2500	MANIL
2500		327°		147°		JUNFU 2000	
GP 3.00° TCH 55		2000		*1160		HOGAB 2.3 NM to RW15	
6 NM		2.6 NM		2.3 NM		RW15	
CATEGORY	A	B	C	D			
LPV DA	777-1¼ 385 (400-1¼)						
LNNAV/VNAV DA	842-1½ 450 (500-1½)						
LNNAV MDA	880-1 488 (500-1)			880-1¾ 488 (500-1¾)			