

WAAS CH 93913 W33A	APP CRS 328°	Rwy Idg TDZE 1803 Apt Elev 1806
--	------------------------	---

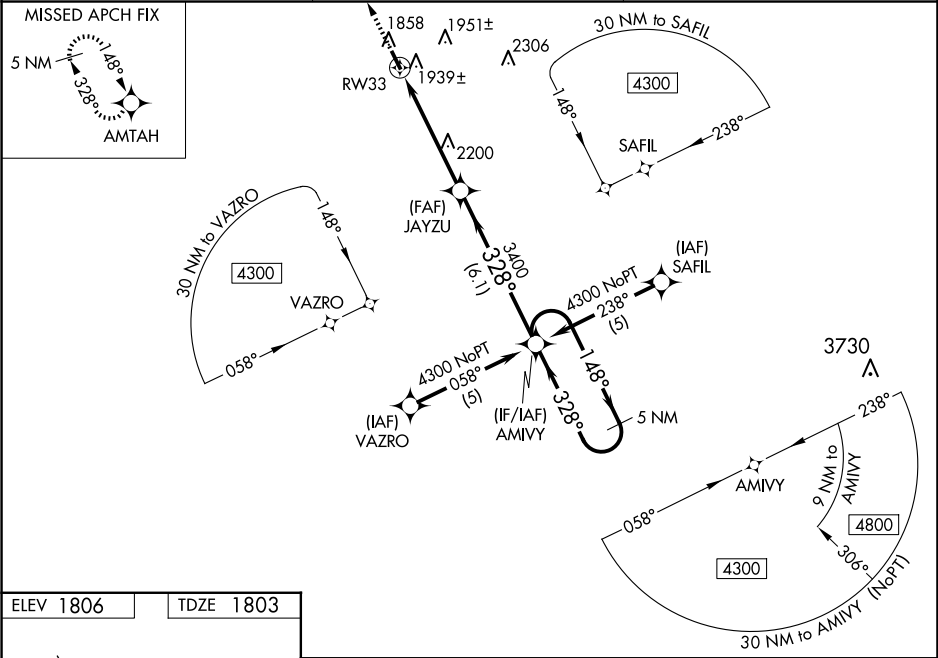
RNAV (GPS) RWY 33

ALBION MUNI (BVN)

⚠ Baro-VNAV NA when using Norfolk altimeter setting. For uncompensated Baro-VNAV systems, LNAV/VNAV NA below -18°C (0°F) or above 54°C (130°F). DME/DME RNP-0.3 NA. Visibility reduction by helicopters NA. When local altimeter setting not received; use Norfolk altimeter setting and increase all DA 106 feet, all MDA 120 feet, increase LPV all Cats visibility ¼ mile, LNAV/VNAV all Cats visibility ½ mile, LNAV Cat B and Circling Cat B visibility ¼ mile. VDP NA when using Norfolk altimeter setting.

MISSED APPROACH:
Climb to 4300 direct
AMTAH and hold.

AWOS-3 118.575	MINNEAPOLIS CENTER 128.0 257.95	CTAF 122.9 0
--------------------------	---	------------------------



3700x60

0.8% UP

328° to RW33

MIRL Rwy 15-33

4300

↑

AMTAH

✦

*LNAV only.

RW33

2.1 NM

2.8 NM

6.1 NM

JAYZU

3400

328°

3400

AMIVY

5 NM Holding Pattern

148°

328°

4300

GP 3.00°

TCH 40

CATEGORY	A	B	C	D
LPV DA	2053-1	250 (300-1)	NA	
LNAV/VNAV DA	2279-1¾	476 (500-1¾)	NA	
LNAV MDA	2500-1	697 (700-1)	NA	
CIRCLING	2500-1	694 (700-1)	NA	