

WAAS CH <b>78009</b> <b>W15A</b>	APP CRS <b>148°</b>	Rwy ldg TDZE <b>1806</b> Apt Elev <b>1806</b>
--	------------------------	---

RNAV (GPS) RWY 15

ALBION MUNI (BVN)

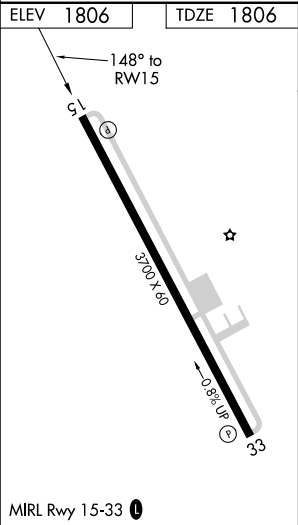
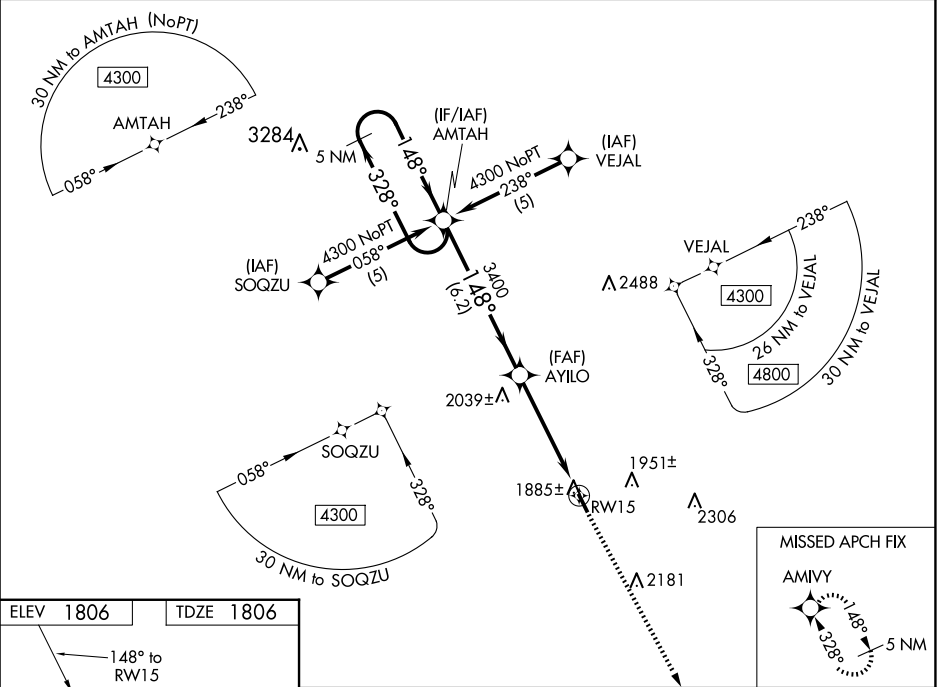
⚠

⚠

For uncompensated Baro-VNAV systems, LNAV/VNAV NA below -18°C (0°F) or above 54°C (130°F). DME/DME RNP-0.3 NA. Visibility reduction by helicopters NA. When local altimeter setting not received, use Norfolk altimeter setting and increase all DA 106 feet, all MDA 120 feet, and increase LPV and LNAV/VNAV visibility ¼ mile all Cats. Baro-VNAV and VDP NA when using Norfolk altimeter setting.

MISSED APPROACH: Climb to 4300 direct AMIVY and hold.

AWOS-3 <b>118.575</b>	MINNEAPOLIS CENTER <b>128.0 257.95</b>	CTAF <b>122.9 0</b>
--------------------------	---	------------------------



<div>5 NM Holding Pattern</div> <div>←328° 4300 →148°</div> <div>GP 3.00° TCH 40</div>				<div>AMTAH</div> <div>AYILO</div> <div>3400</div> <div>6.2 NM</div> <div>3.9 NM</div> <div>0.9</div>		<div>4300 ↑</div> <div>AMIVY ↗</div> <div>*0.9 NM to RW15</div> <div>*LNAV only.</div> <div>RW15</div>	
CATEGORY	A	B	C	D			
LPV DA	2130-1¼	324 (400-1¼)	NA				
LNAV/VNAV DA	2269-1¾	463 (500-1¾)	NA				
LNAV MDA	2140-1	334 (400-1)	NA				
CIRCLING	2360-1 554 (600-1)	2420-1 614 (700-1)	NA				